



ABMR For Windows

Bare Machine Recovery for Dell EMC Avamar™

User Guide

Version 9.6.1 released April 2024

**Copyright © 2013-2024 Cristie Software Ltd.
All rights reserved.**

The software contains proprietary information of Cristie Software Ltd.; it is provided under a license agreement containing restrictions on use and disclosure and is also protected by copyright law. Reverse engineering of the software is prohibited.

Due to continued product development this information may change without notice. The information and intellectual property contained herein is confidential between Cristie Software Ltd. and the client and remains the exclusive property of Cristie Software Ltd. If you find any problems in the documentation, please report them to us in writing. Cristie Software Ltd. does not warrant that this document is error-free.

No part of this publication may be reproduced, stored in a retrieval system, or transmitted in any form or by any means, electronic, mechanical, photocopying, recording or otherwise without the prior written permission of Cristie Software Ltd.

- *IBM Tivoli Storage Manager (TSM), AIX and TIVOLI are trademarks of the IBM Corporation.*
- *IBM Spectrum Protect is a trademark of the IBM Corporation.*
- *IBM Virtual I/O Server (VIOS) is a trademark of the IBM Corporation.*
- *NetWorker and Avamar are trademarks of the Dell EMC Corporation.*
- *vSphere, vCenter and vCloud are trademarks of VMware Inc.*
- *Hyper-V is a trademark of Microsoft Corporation.*
- *Azure is a trademark of Microsoft Corporation.*
- *Amazon Web Services (AWS) and Amazon Elastic Compute Cloud (EC2) are trademarks of Amazon.com, Inc.*
- *Cohesity DataProtect is a trademark of Cohesity Inc.*
- *Rubrik is a trademark of Rubrik Inc.*
- *CloneManager® is a registered trademark of Cristie Software Ltd.*
- *SysBack is a registered trademark of Cristie Software Ltd.*

PC-BaX, UBax, Cristie P4VM (Protect for VMs), Cristie Storage Manager (CSM), SDB, ABMR (Bare Machine Recovery for EMC Avamar), NBMR (Bare Machine Recovery for EMC NetWorker), TBMR (Bare Machine Recovery for Spectrum Protect/TSM), CBMR (Cristie Bare Machine Recovery), CoBMR (Bare Machine Recovery for Cohesity DataProtect), RBMR (Bare Machine Recovery for Rubrik) and CRISP (Cristie Recovery ISO Producer) are all trademarks of Cristie Software Ltd..

Cristie Software Ltd
New Mill
Chestnut Lane
Stroud
GL5 3EW
UK

Tel: +44 (0) 1453 847009

Email: support@cristie.com

Website: <https://www.cristie.com>



Contents

1	Document conventions	5
2	Overview	6
	2.1 Prerequisites	6
	2.2 Backup Process	6
	2.3 Recovery Process	7
3	Create The Bootable Recovery Environment	8
4	The ABMR Create Configuration Tool	9
	4.1 Creating the Configuration Information	9
	4.1.1 Creating a AMBRcfg Pre-Schedule	11
5	Using an Dell EMC Avamar™ Backup for Disaster Recovery	13
	5.1 Understanding Dell EMC Avamar™ restores	13
	5.2 Encrypted Backups	14
6	Restoring your System	15
	6.1 Booting the WinPE5, WinPE10 or WinPE11 DR Environment	15
	6.2 WinPE5, WinPE10 or WinPE11 Based ABMR Recovery Environment	16
	6.2.1 ABMR Recovery Environment Main Menu	17
	6.2.2 Begin the Restore Process	20
	Logfile Save Path.....	20
	Specify Dell EMC Avamar™ Details and PIT Restore.....	22
	Storage Pools.....	25
	Confirm Volume Layout.....	30
	Select Volumes To Restore.....	35
	Clone Settings.....	37
	Dissimilar Hardware.....	38
	Disk Recovery Sequence.....	40
	Disk Scaling.....	43
	6.2.3 Tools	44
	Dissimilar Hardware Wizard.....	46
	Load a Driver.....	52
	Copy log files to removable media or network location	53
	6.2.4 Show a list of log files for viewing	54
	6.2.5 Cristie Network Configurator Tool	55
	Configure NIC Parameters.....	56
	Assign Static or DHCP IP Settings.....	59
	Map a Network Drive.....	61



	Unmap a Network Drive.....	62
	Setup DNS Servers.....	63
	Setup Network Identification.....	64
	6.2.6 Cristie Route Configurator	65
	IPv4	65
	IPv6	67
	Diagnostics.....	69
	6.2.7 Reboot	71
	6.3 Active Directory Recoveries	71
7	Appendices	72
	7.1 Storage Pool support	72
	7.2 uEFI and MBR BIOS support	73
8	Cristie Technical Support	79



1 Document conventions

The following typographical conventions are used throughout this guide:

<code>/etc/passwd</code>	represents command-line commands, options, parameters, directory names and filenames
Next >	used to signify clickable buttons on a GUI dialogue
Note:	describes something of importance related to the current topic



2 Overview

This document describes the essential elements of **Bare Machine Recovery for Dell EMC Avamar™ (ABMR)** and **Disaster Recovery** based upon a tailored **WinPE5, WinPE10 or WinPE11** recovery module. It is based upon version 9.6.1 of the software.

This document describes the steps required to install, configure and use the Bare Machine Recovery for Dell EMC Avamar™ (ABMR) product. Refer to the product **Readme** for installation requirements and late breaking information associated with this release.

2.1 Prerequisites

Note: Please refer to the product Readme for the supported operating systems, RAM and free disk space required. A full list of supported Dell EMC Avamar™ clients and servers is included in the Readme.

Ensure that the **System State** check-box is enabled when performing the backup from the server. This allows important OS files that are normally held open by the OS to be successfully backed up by Dell EMC Avamar™. ABMR will not successfully recover the OS without these files.

2.2 Backup Process

ABMR allows you to perform a bare machine recovery of your system direct from a Dell EMC Avamar™ backup.

To do this you must first prepare your system using the process outlined below:

Installation (refer to the ABMR Installation and Licensing Guide)

- *Install the ABMR configuration software on the client system to be protected*
- *Licence the software (using a Trial or Full licence)*

Configuration

- *Save the configuration parameters.*
- *Install and run the Cristie Recovery ISO Producer (CRISP) tool on a suitable system to create the ABMR WinPE5, WinPE10 or WinPE11 based DR environment. This only needs to be done once per client version you wish to support.*

Backup system and user data

- *Perform regular standard Dell EMC Avamar™ backups as required*

You will then be ready to Restore the system from the Disaster Recovery Backup.



2.3 Recovery Process

In the event of a disaster, having previously taken a Dell EMC Avamar™ backup of the system and stored the configuration information, Windows WinPE5, WinPE10 or WinPE11 mode DR enables you to restore your system to the state at the last Dell EMC Avamar™ backup.

The bootable ABMR recovery console must be created first by using the Cristie Recovery ISO Producer (CRISP) tool. The output from this tool is either a bootable ISO (which can be either burnt to physical CD/DVD media or used directly in a virtual environment) or a bootable USB flash drive.

If your machine supports bootable CDs, this is the most convenient way to boot the DR module. If the system does not support bootable CDs, you can boot from the network or the USB flash drive. Contact Cristie for details on how to set this up.

Windows WinPE5, WinPE10 or WinPE11 offers several advantages, namely:

- *A familiar Windows GUI*
- *The ability to inject new mass storage drivers during the boot process*
- *All variations of Windows dynamic disks are supported (ie. mirrored, spanned, striped and RAID-5)*
- *NTFS volumes/partitions are created natively*
- *Support for NTFS mounted folders (junctions) and hard links*
- *The restored backup contains the original file security information*
- *BIOS (MBR) to UEFI (GPT) conversion on recovery*

The WinPE5, WinPE10 or WinPE11 recovery process has five main steps:

1. *Load Configuration data*
2. *Rebuild storage devices (hard disks)*
3. *Restore OS files from a Dell EMC Avamar™ backup*
4. *Dissimilar Hardware and inject new drivers (if necessary)*
5. *Boot into the recovered system*



3 Create The Bootable Recovery Environment

The supplied CRISP tool is used to create the ABMR recovery environment. This environment is based upon a customised version of Microsoft's WinPE version 5 (WinPE5), WinPE10 or WinPE11.

Cristie Software Ltd. recommend using the WinPE10 or WinPE11 based environment if possible. This is based upon Windows 10/11 and is more likely to be compatible with modern hardware. Use the WinPE5 legacy version for Windows 2012R2 or earlier.

Once created the recovery environment is booted on the target system and then manages the restore process.

The CRISP tool should be run in conjunction with the supplied CRISP WinPE5, WinPE10 and WinPE11 Filesets for ABMR 9.6. The fileset(s) should be installed alongside the CRISP on the same host.

ABMR requires a specific Dell EMC Avamar™ client to be added during the creation of the ABMR recovery environment ISO. You will need to specify or browse to a folder containing the appropriate Dell EMC Avamar™ 64-bit (WinPE5/WinPE10/WinPE11) client installation MSIEXEC file (with file extension .MSI). An example of this is AvamarClient-windows-x86_64-19.4.100-116.msi. **This is important; it will not be possible to create the bootable recovery ISO/USB flash drive without this Dell EMC Avamar™ client installation file.**

Note: Always use a 64-bit (x64) version for WinPE5/WinPE10/WinPE11 based builds.

You will need to create separate ISOs/USB flash drives for each Dell EMC Avamar™ client used. Use an ISO/USB flash drive version that corresponds to the client version used for the backup. So, for example, use an ISO/USB flash drive created with the Dell EMC Avamar™ client version 7.4.100 to match backups made with that version.

A full discussion of how to install and run CRISP is contained in the separate [CRISP User Guide](#). Note that CRISP does not need to be installed on the system to be backed up; any suitable host machine will do.

Output from the CRISP tool is either a bootable WinPE5, WinPE10 or WinPE11 ISO file which can then be burnt to physical media (CD or DVD) or mounted directly in a VM environment or a bootable USB flash drive. This media is then booted on the target machine to manage the recovery operation.

Note: Microsoft Powershell is now available in the WinPE5, WinPE10 or WinPE11 DR environments. However this option must be selected when you create the ISO or bootable USB flash drive.



4 The ABMR Create Configuration Tool

Configuration information is saved by default to the **ABMRCFG** folder on the Windows system partition. This cannot be changed.

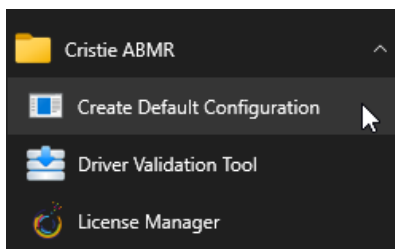
The Cristie tool that provides this function is called **ABMRCfg.exe** which is located in the ABMR installation folder (normally **Program Files\Cristie\ABMR**). This is a command line only tool which is licensed for use for a 30 initial day trial period. A full license is required to use the program beyond the trial period.

As part of this process, details about the hard disks, operating system, storage controller (s), network adapter(s) and network settings will be queried and stored. You can override some of these details if you wish. The result of the configuration creation (success or failure) is recorded in the Windows Application Event Log.

The next sections discuss this process in more detail.

4.1 Creating the Configuration Information

The easiest way to create the configuration manually is to select the [Create Default Configuration](#) shortcut provided on the Start menu for ABMR. Note however that an initial configuration is created during the ABMR installation process.



This will create a new configuration using the default settings.

```
=====
                ABMR Configuration Utility Version 9.6 for x64
                Copyright (C) 2009-2024 Cristie Software Limited
=====

Copying the EFI files ...
Successfully copied the EFI files
Created a snapshot of C:\ --> A:\
Searching for files missed under C:\Users ...
Searching for files missed under C:\Windows\ServiceProfiles ...
Searching for files missed under C:\Windows\WinSxS ...
Successfully copied the missed assembly directory
Searching for files missed under C:\Windows\System32 ...
Saving hard-link information ...
```

If you need to select non-default settings, then you will need to create the configuration manually. Run a command window and navigate to the folder where ABMR is installed.

The ABMR configuration program is called **ABMRCfg.exe**. Enter the command `ABMRCfg.exe /?`. This will display the command line options available.



```
c:\Program Files\Cristie\ABMR>ABMRCfg.exe /?

=====
                ABMR Configuration Utility Version 9.6 for x64
                Copyright (C) 2009-2024 Cristie Software Limited
=====

Usage: ABMRCFG.EXE [options]

Options are:

/help or /? - Show usage
/format <Drives to format|all> - Format additional volumes during recovery
    Specify drives separated by comma as in /format D,E,F

    For a volume that does not have a drive letter but mounted
    under a folder, enter the mounted folder as in
    /format D,D:\MountedVolume
    /format all will format all partitions on all disks

/skiphardlinks - Skip hard-link processing for CoBMR block-based backups
    and RBMR volume group backups only

The configuration will always be stored in %%SystemDrive%%\ABMRCFG
```

The command line options are very simple:

/help or /?

shows **ABMRCfg** usage. This displays the command option summary.

/format <Drives to format | all>

The `/format` option allows disk volumes other than the Windows drive to be formatted during the recovery. By default, only the Windows volume will be formatted. There is an exception to this if Windows is not contained within the first partition of the disk. In that case, both the Boot partition and the Windows partition will be configured for formatting. However, regardless of this setting, the WinPE5, WinPE10 or WinPE11 based recovery environment will allow any or all partitions to be formatted.

So, for example, if volumes D:, E: and F: are to be additionally formatted during recovery, enter:

```
ABMRCfg.exe /format D,E,F (separate the drive letters using a comma)
```

Enter the following to back up all partitions on all drives on the system:

```
ABMRCfg.exe /format all
```

Volumes mounted on local folders not having a drive letter can be specified like this:

```
ABMRCfg.exe /format D:\MountedVolume
```

where `D:\MountedVolume` is the folder mount point. An example using both normal partitions and a mounted volume is:

```
ABMRCfg.exe /format D,D:\MountedVolume
```

ABMRCfg stores the configuration in `%SystemDrive%\ABMRCFG` folder (`%SystemDrive%` is the drive associated with the Windows folder, usually `c:\`). This location cannot be changed and will be created if not already present.

Note: it is important to remember that the ABMR configuration must be created before the Dell EMC Avamar™ backup is made. Cristie suggests that this is done by creating a job to run on the Dell EMC Avamar™ Scheduler containing a script that calls the ABMRCfg.exe program installed in the ABMR installation folder. Where supported you could also create a pre-script on the server to run this program prior to the backup itself.

4.1.1 Creating a AMBRcfg Pre-Schedule

The pre-schedule command is to run the ABMR configuration program (abmrcfg) on the source machine automatically when the EMC Avamar scheduled backup has triggered, this makes sure the config file used in the backup is up to date.

This works by adding a script to the source machine and modifying the Client Properties in the EMC Avamar administrator console to point to the script.

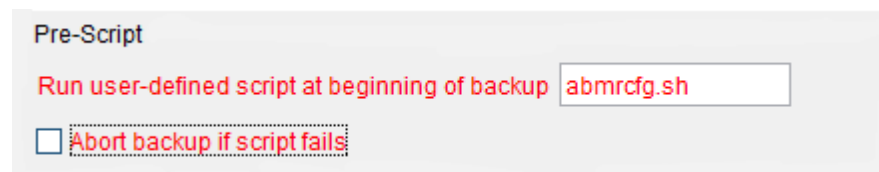
Once this is completed, EMC Avamar will run the script on the client that triggers abmrcfg, then the EMC Avamar backup starts.

There are certain conditions that must be met:

The script name must be a .sh extension.

The script must reside on the client in the '/usr/local/avamar/etc/scripts/' directory on the source machine.

All commands within the program file must complete successfully. Otherwise, the EMC Avamar server cannot complete the remaining instructions e.g. the actual backup. However a script failure can be ignored by un-ticking 'abort backup if script fails'.



Pre-Script

Run user-defined script at beginning of backup

Abort backup if script fails

The Script should reside in:

C:\Program Files\avs\etc\scripts folder and must have a .bat, .js, or .vbs file name extension.

A basic script to run the config on Windows could include:

```
cd c:\Program Files\Cristie\ABMR
abmrcfg.exe
```

On the Avamar Administrator console add the script name to the appropriate dataset or backup advanced options plugin. e.g.



Pre-Script

Run user-defined script at beginning of backup

Abort backup if script fails

Post-Script

Show Advanced Options

The script can also go into the plugin to be trigger on the schedule at: 'run-at-start=<script.name>'.

Name: /JD2/test_ABMR/DTS_test_ABMR

Type: Backup

Sort by: Plug-in

Source Data	Exclusions	Inclusions	Options
All local Linux filesystems			<ul style="list-style-type: none">jdefault-traversal=truecheckcache=falseddr-encrypt-strength=highddr-index=1ddr=truedebug=falsefilecachemax=-8force=falsehashcachemax=-16informationals=2one-file-system=falserepaircache=falserun-at-end-exit=truerun-at-start-exit=truerun-at-start=pre.shstatistics=falseverbose=0

The script will then be triggered on backup schedule or one off backup.



5 Using an Dell EMC Avamar™ Backup for Disaster Recovery

ABMR allows a previously created Dell EMC Avamar™ backup to be used as a DR backup.

As long as the ABMR configuration has been created (see previous section) and a Dell EMC Avamar™ backup is performed afterwards, then it will be possible to recover the system using the DR environment.

When performing backups ensure that the Dell EMC Avamar™ options **Windows File System** and **Windows VSS** are selected.

Note: this document does not describe how to create Dell EMC Avamar™ backups. Please refer to your Dell EMC Avamar™ Administrator's Guide for details.

Note: When using a ABMR backup to recover a Windows Domain Controller the recovered system will boot twice.

5.1 Understanding Dell EMC Avamar™ restores

It is important to understand how ABMR performs a disaster recovery (DR) machine restore and how it interprets "full" and "partial" Dell EMC Avamar™ backups particularly when used during a **Point-in-Time (PIT)** recovery.

Firstly a few definitions:

Full backup: A complete machine backup including Windows **SystemState**. This form of backup is generally run from the Dell EMC Avamar™ server.

Partial backup: A backup of a single or group of files and folders. It can be run from either the Dell EMC Avamar™ client or server.

By default ABMR will recover the latest full backup first and then any partial backups made since that full backup was created. These are restored in chronological order. If there is no full backup, then all partial backups will be restored, oldest first. However without at least one full backup (with SystemState) found the restored machine may not boot.

A PIT recovery will first recover the latest full backup (if there is one) no newer than the point-in-time specified by the User. Then any partial backups created after the full backup that are also no newer than the point-in-time specified are restored. If there is no full backup, then all partial backups no newer than the point-in-time specified will be restored, oldest first. However without at least one full backup (with SystemState) found the restored machine may not boot.

Note: As a result of these techniques numerous partial backups can significantly increase the overall DR time.

Cristie strongly recommends that all DR backups are performed using the Dell EMC Avamar™ server with the whole machine and SystemState selected.



5.2 Encrypted Backups

ABMR supports encrypted Dell EMC Avamar™ backups.

Dell EMC Avamar™ allows the **Encryption Method** to be set at **None**, **Medium** or **High** when the backup is performed.



6 Restoring your System

This section discusses the steps required to run a recover sequence using the ABMR Recovery Environment. The console is booted from the media created by CRISP in conjunction with the CRISP WinPE5, WinPE10 and WinPE11 Filesets for ABMR 9.6 (see Create the bootable cloning environment for further details).

The WinPE5, WinPE10 or WinPE11 based recovery environment is booted on the **target** system. This could be the original or a dissimilar system.

A typical ABMR recovery sequence consists of the following steps.

1. Install and run the **Cristie Recovery ISO Producer (CRISP)** tool on a suitable system to create the ABMR WinPE5, WinPE10 or WinPE11 based recovery environment either as a CD/DVD ISO image or direct to a USB flash drive. This only needs to be done once per Dell EMC Avamar™ client used.
2. Boot the correct WinPE5, WinPE10 or WinPE11 ABMR recovery environment on the target system to correspond with the client used to perform the backup.
3. Run a restore sequence from the recovery environment on the target system using the Dell EMC Avamar™ backup.
4. When the restore operation is complete and, before booting the system, you may change the hostname and IP address as required. If the target system uses different hardware from the source system inject additional drivers into the system using the hardware wizard tool. This tool will detect any new devices in the target system and prompt for the drivers.
5. Boot the recovered system.

Note: It is important that the correct version of the DR ISO/USB flash drive is used for recovery. Use an ISO/USB flash drive version that corresponds to the client version used for the backup. So, for example, use the ISO/USB flash drive created with the Dell EMC Avamar™ client version 18.1.100-33 for backups made with that version.

6.1 Booting the WinPE5, WinPE10 or WinPE11 DR Environment

Insert the bootable ABMR WinPE5, WinPE10 or WinPE11 DR CD/DVD or USB flash drive and reboot the machine. By default you will be prompted to **Press any key to boot from the CD or DVD** unless you have disabled this feature when creating the ISO/USB flash drive in CRISP.

Press any key to boot from CD or DVD. _

This prompt is only made for a few seconds before the system will attempt to boot the underlying OS, so you will need to react quickly.

Note: It is possible to suppress this prompt completely during the ISO/USB flash drive creation stage. If the prompt is disabled then the DR ISO/USB flash drive image will always be booted by default. Please refer to CRISP documentation which describes how to do this.

To support devices (for example a new mass storage controller) not supported in the current DR environment, WinPE5, WinPE10 or WinPE11 allows drivers for any device to be injected at any time post boot. Refer to the section titled Load a Driver for information on



how to do this. Ensure you add the correct driver version; 64-bit only for WinPE5/WinPE10.

6.2 WinPE5, WinPE10 or WinPE11 Based ABMR Recovery Environment

When the ABMR WinPE5, WinPE10 or WinPE11 Environment is booted, a Windows installation-like boot procedure is started.

During the boot process, WinPE5, WinPE10 or WinPE11 drivers for your Plug and Play devices will be loaded - in particular the **Mass Storage** devices and **Network Adapters**. When the WinPE5, WinPE10 or WinPE11 system has fully booted, it is possible to remove the CD/USB flash drive if you wish.

Note: the DR Environment will automatically reboot 72 hours after starting. This is an operating limitation of the Microsoft Windows WinPE5, WinPE10 or WinPE11 environment.

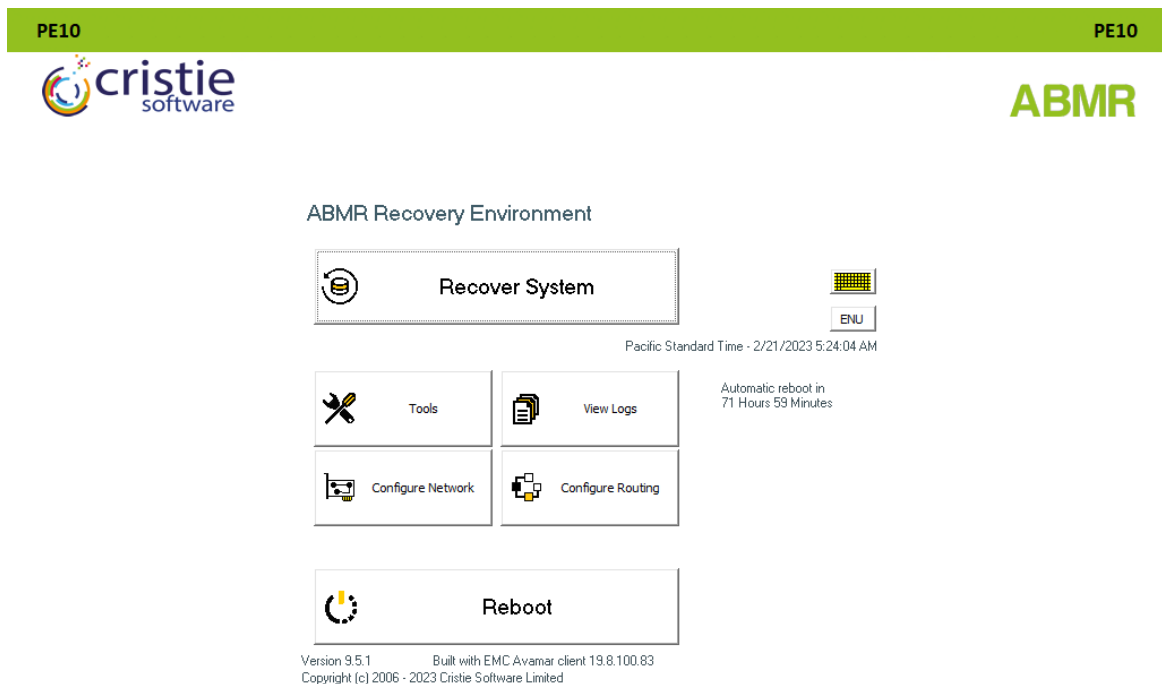


When this sequence completes, the ABMR **Recovery Environment** will be shown.



6.2.1 ABMR Recovery Environment Main Menu

When you boot the **WinPE5, WinPE10 or WinPE11** DR environment (the WinPE5, WinPE10 and WinPE11 versions are very similar), you will see the **ABMR Recovery Environment** Main Menu as below:



Prior to beginning the restore operation you may configure the network and/or the network routing as necessary. Click the

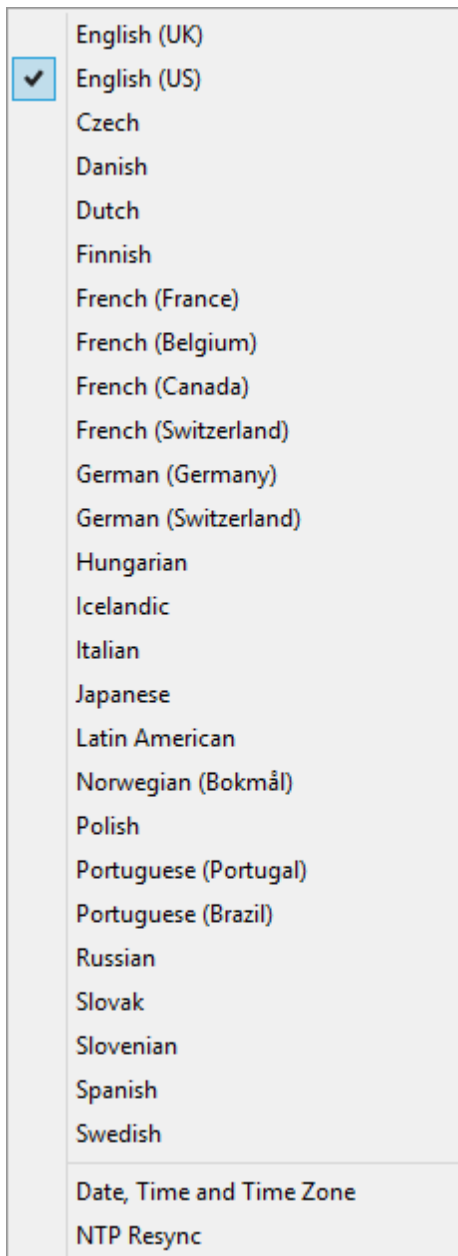


icons to do this.

A reboot countdown clock is shown **Automatic reboot in 68 Hours 14 Minutes**. This indicates how much time is available before the WinPE5 and WinPE10/WinPE11 recovery environment automatically reboots. Note this is a Microsoft constraint for the WinPE environment.

You may configure the format of the displayed date/time and the keyboard layout, by pressing the locale **ENU** icon. Note this icon will be shown according to the locale of the host system used to create the ISO/USB flash drive using the CRISP utility so it may not match the version shown here. So if, for example, the ISO/USB flash drive was built on a machine configured with a UK locale it will be displayed as **ENG**.

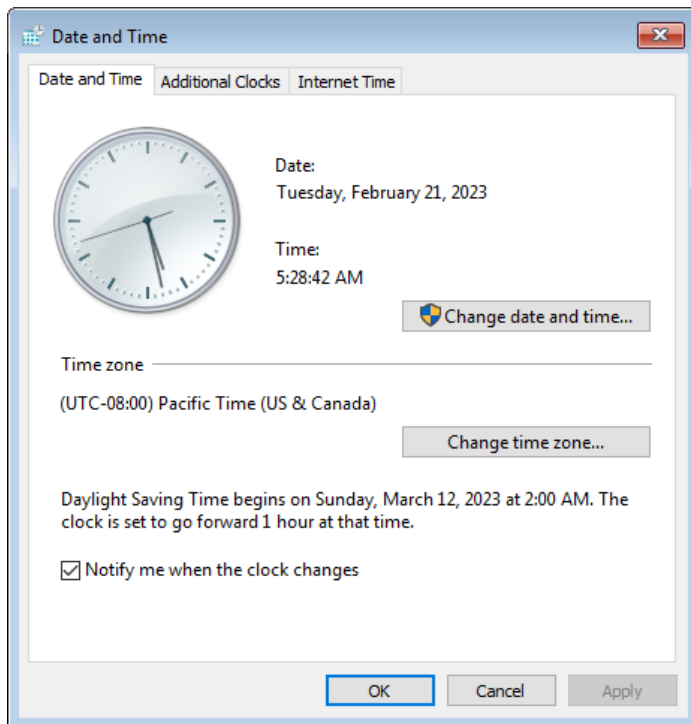





By default the standard display uses a keyboard layout to match the default locale as discussed above. However, this may be changed to one of the listed alternatives. Note that this does not change the display language which is always English.

Select **Date, Time** and **Time Zone** to configure the time zone for the recovery.





Note: the Additional Clocks and Internet Time tabs are operational. In fact it is possible to synchronise the system time with an NTP time server if required.

Finally if your recovery environment does not provide keyboard support (perhaps a driver issue) use the on-screen keyboard which can be displayed by clicking . This then shows a clickable keyboard at the bottom of the screen. The keyboard layout displayed will correspond to the currently selected locale.




ABMR

ABMR Recovery Environment



Use this for any data entry.

Note the DR environment requires a working mouse as a minimum.

6.2.2 Begin the Restore Process

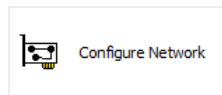
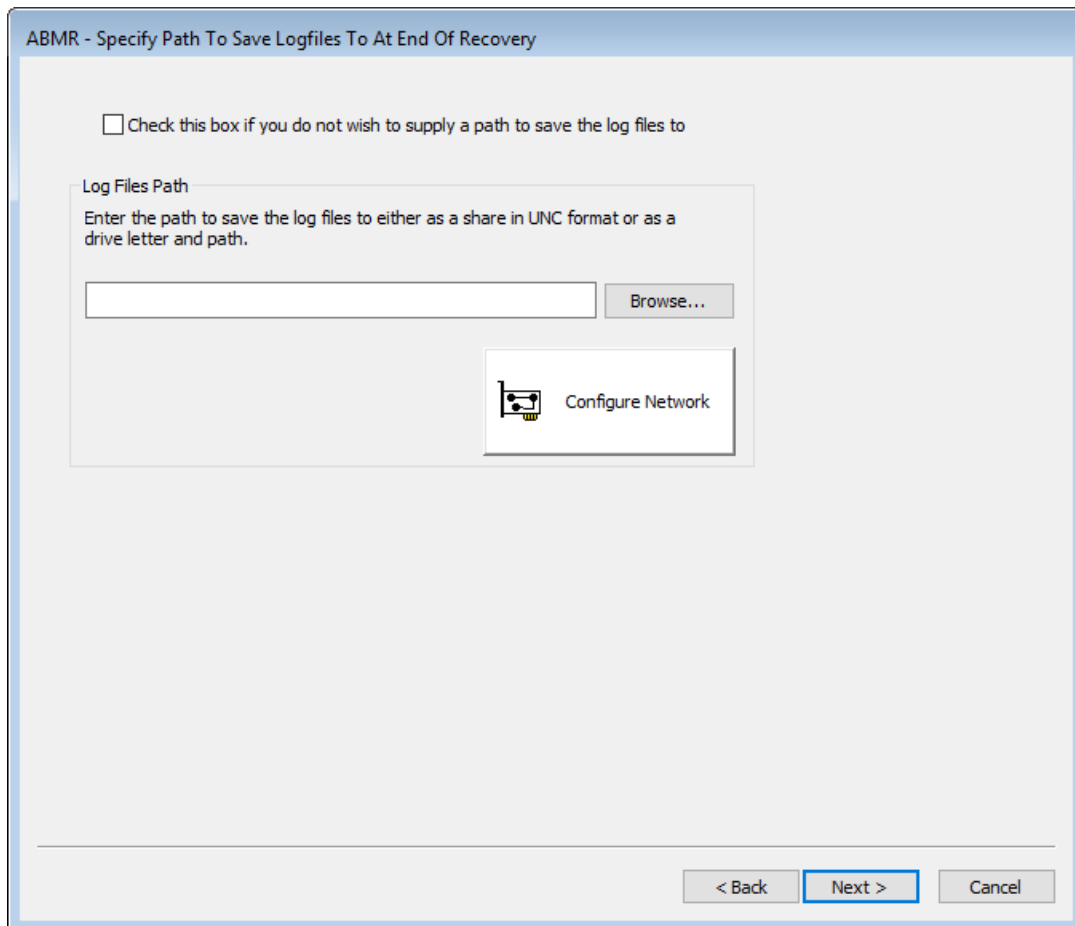
Click the **Recover System** option to begin the recovery sequence.

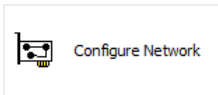


6.2.2.1 Logfile Save Path

Before starting the restore process you should configure a location to save the recovery logs. This can be a network location or physical media (such as a USB flash drive). The logs will be automatically saved to the configured location at the end of the restore process without further intervention.

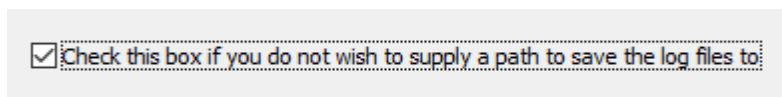




For example, use the  option to first map a network share location and then [Browse](#) to select a folder on the share.



If you do NOT want to automatically save the the logfiles please check the tick-box to skip this step.



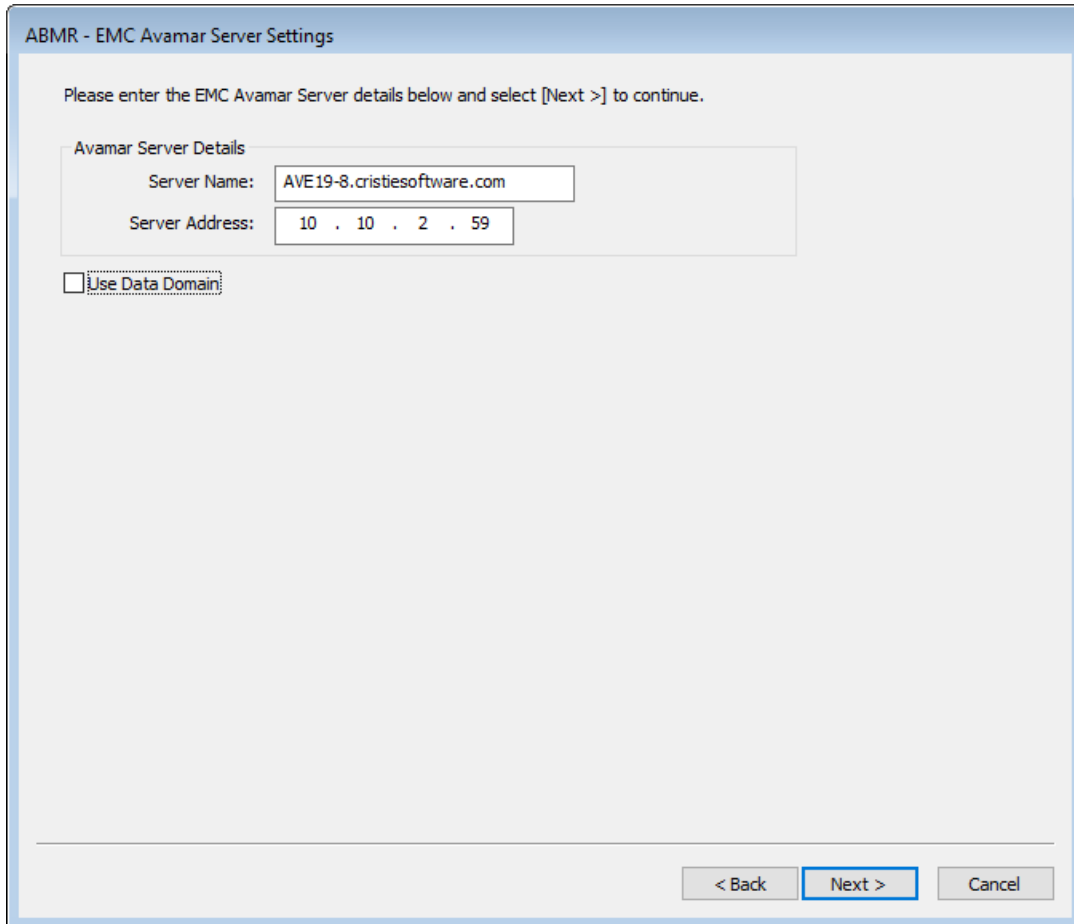
Click [Next >](#) to continue to the next step.

You will still have the opportunity at the end of the restore process to save the logfiles if you wish.



6.2.2.2 Specify Dell EMC Avamar™ Details and PIT Restore

The first step of the automatic recovery identifies the location of the **Dell EMC Avamar™ Server Details** used to back up the client system.



ABMR - EMC Avamar Server Settings

Please enter the EMC Avamar Server details below and select [Next >] to continue.

Avamar Server Details

Server Name: AVE19-8.cristiesoftware.com

Server Address: 10 . 10 . 2 . 59

Use Data Domain

< Back Next > Cancel

Select **Data Domain** if this has been used for the backup and then add the Data Domain server details.



ABMR - EMC Avamar Server Settings

Please enter the EMC Avamar Server details below and select [Next >] to continue.

Avamar Server Details

Server Name: AVE19-8.cristiesoftware.com

Server Address: 10 . 10 . 2 . 59

Use Data Domain:

Data Domain Server Details

Server Name:

Server Address: . . .

< Back Next > Cancel

Now specify the client details in the next dialogue.



ABMR - EMC Avamar Client Settings

Please enter the EMC Avamar Client details below and select [Next >] to continue.

Authentication

Username:

Password:

Client Details

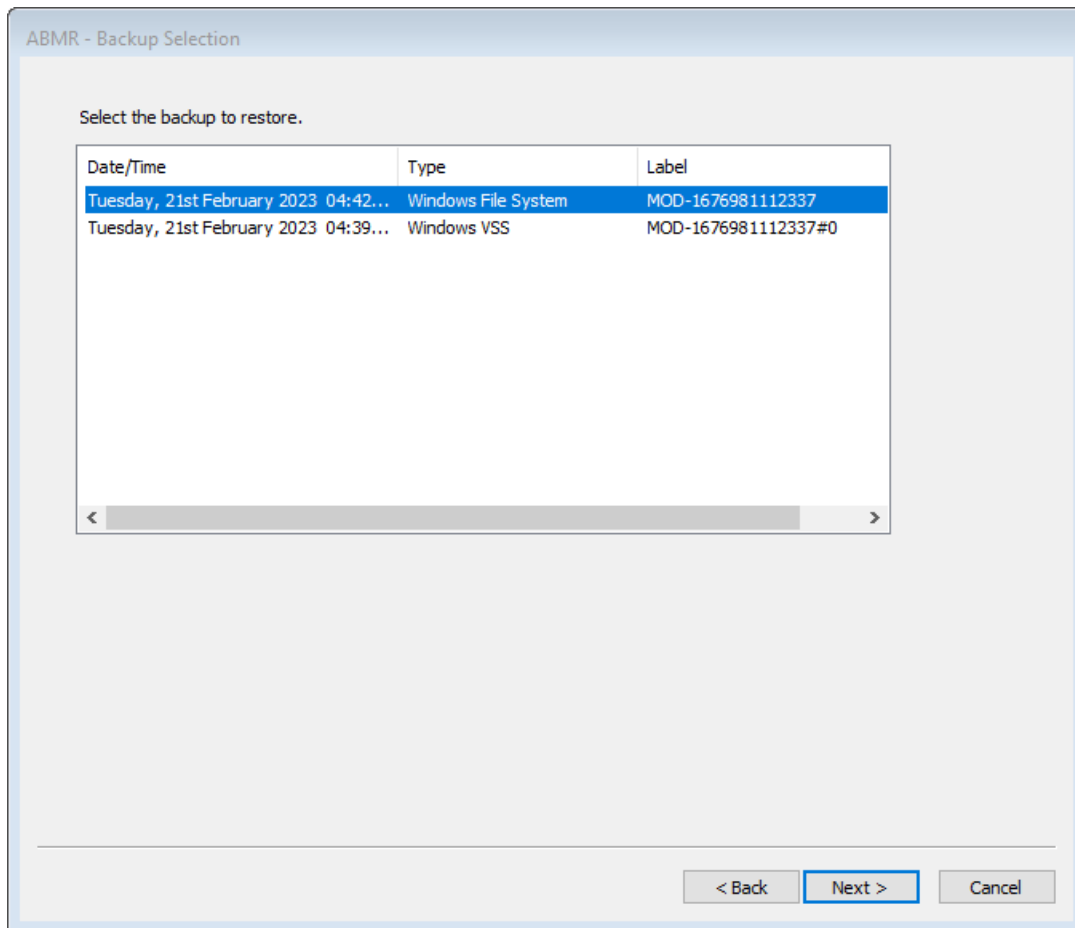
Domain:

Client Name:

< Back Next > Cancel

Click [Next >](#) to proceed. If more than 1 recovery point is detected on the server for the source they will then be displayed like this.





Select the required restore point from the list. Cristie recommends selecting the latest whether its the **Windows File System** or the **Windows VSS** dataset. Latest is shown at the top. Select **Next>** to continue.

At this point the Source will be accessed on the specified server and the machine configuration extracted.

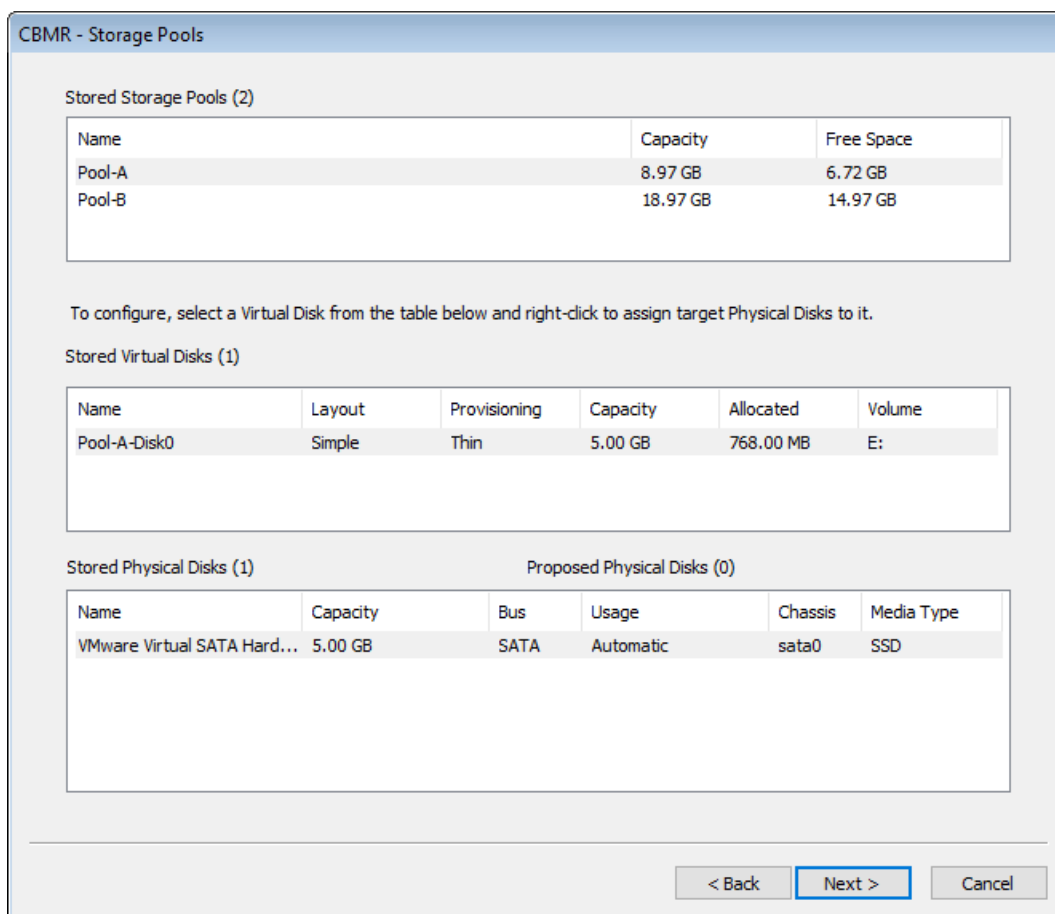
6.2.2.3 Storage Pools

If your original source host contained any Windows Storage Pools then this step will be run to allow the pool/disk setup to be configured. If no Storage Pools were configured in your selected backup this step will be skipped.

Note: Storage Pool recovery only works with the WinPE5 version of the ABMR DR environment. Do not use the WinPE10 version for Storage Pool recovery.

The pool/disk configuration dialogue looks like this:





The pool configuration requires you to map the original pool/virtual disk configuration to the physical disk layout detected on the target. This may have more or fewer disks than the original so this re-mapping needs to be done manually.

There are 3 sections in the dialogue:

- **a list of the original configured pools with their corresponding capacity and the free space at the time of the backup.**
- **a list of the original virtual disks defined for a selected pool together with the corresponding virtual disk layout, provisioning, capacity, size in use and volume letter.**
- **a list of the original physical disks and the proposed physical disks discovered on the target system for the selected virtual disk.**

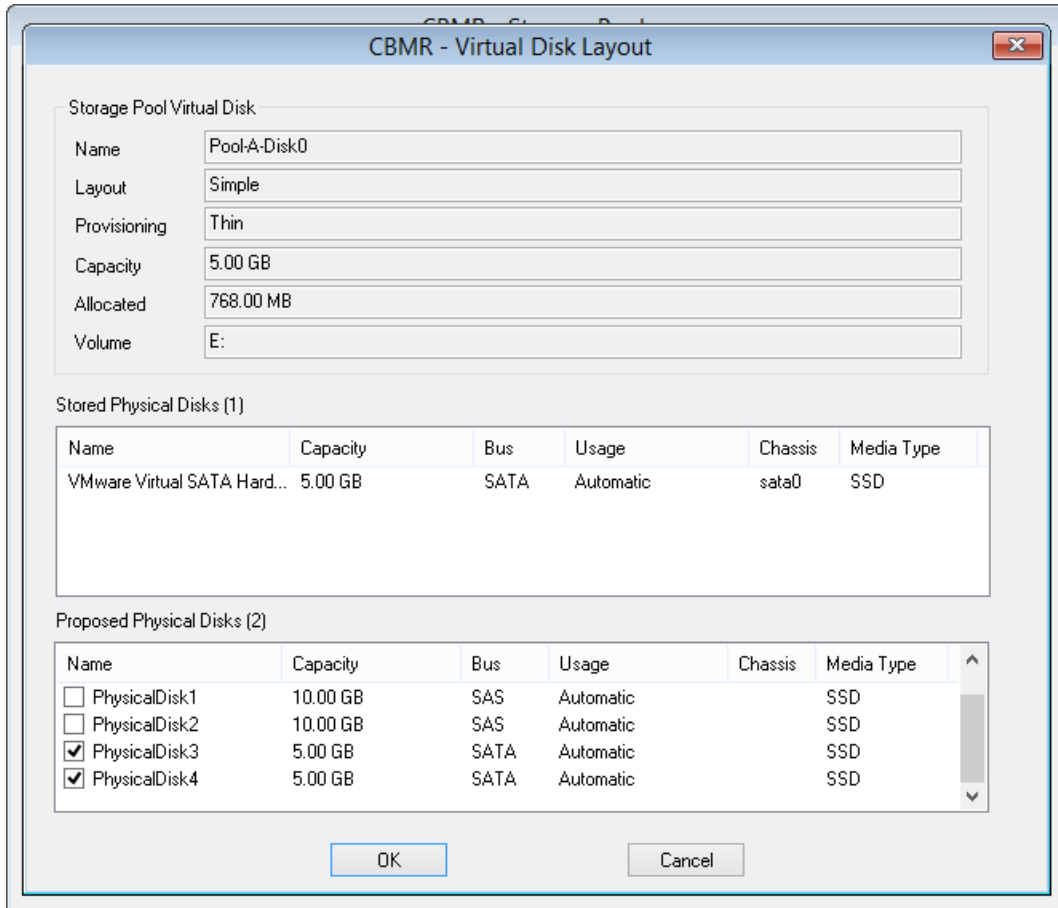
To assign physical disks to a virtual disk right-click the virtual disk to display the Virtual Disk Layout dialogue.

This is a recovery of a Windows 2019 server with 2 Storage Pools, named Pool-A and Pool-B. Pool-A is currently selected which is showing the Virtual Disk that was in the Storage Pool on the source system. The screenshot below shows the Physical Disks that the Virtual Disk was built from on the source system. There were 2 of them and they were all SATA (shown as Bus Type SATA).



Note that the **Proposed Physical Disks** has a count of zero, i.e. there are no target Physical Disks selected yet to recreate this Virtual Disk from, where **Stored** = **Source system** and **Proposed** = **Target system**.

Right-click on the virtual disk, to display the disk selection dialogue.



In the example above the 2 target physical disks that makeup the original virtual disk are selected. Note the proposed disk count is now non-zero.

Repeat this process for all the remaining virtual disks in each pool. This results in a configuration similar to this:



CBMR - Storage Pools

Stored Storage Pools (2)

Name	Capacity	Free Space
Pool-A	8.97 GB	6.72 GB
Pool-B	18.97 GB	14.97 GB

To configure, select a Virtual Disk from the table below and right-click to assign target Physical Disks to it.

Stored Virtual Disks (2)

Name	Layout	Provisioning	Capacity	Allocated	Volume
Pool-B-Disk0	Simple	Thin	5.00 GB	768.00 MB	F:
Pool-B-Disk1	Simple	Thin	5.00 GB	768.00 MB	G:

Stored Physical Disks (1)

Name	Capacity	Bus	Usage	Chassis	Media Type
VMware, VMware Virtual S	10.00 GB	SAS	Automatic	SCSI0	SSD

Proposed Physical Disks (2)

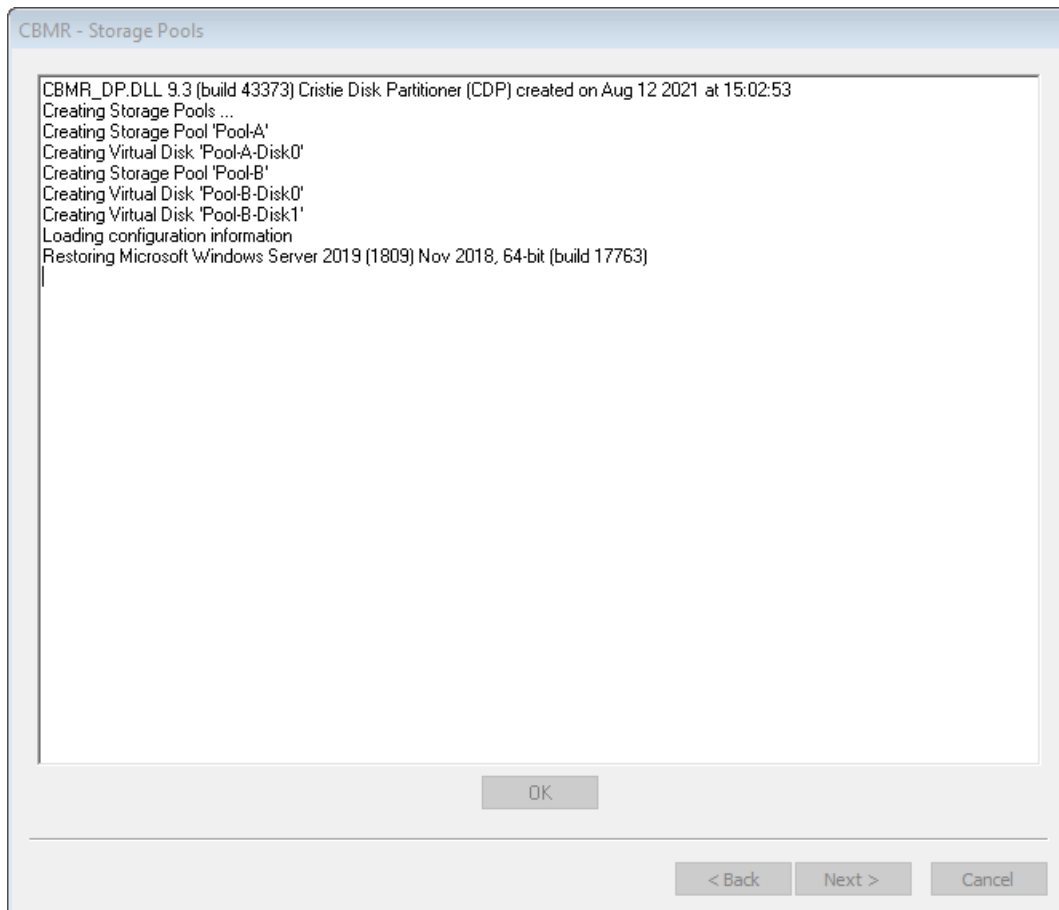
< Back Next > Cancel

Note: There are some constraints on this configuration. For example, it is not recommended to have fewer or more physical disks mapped to your target virtual disk compared with the original source configuration.

Now click **Next >** to continue or **< Back** to return to the previous dialogue.

At this point the Storage Pools and virtual disks will be created.





Note: if no target disks are assigned during the Storage Pool step then recovery will still proceed but no Storage Pools will be restored.

Recovery now runs as normal with no further Storage Pool configuration required.

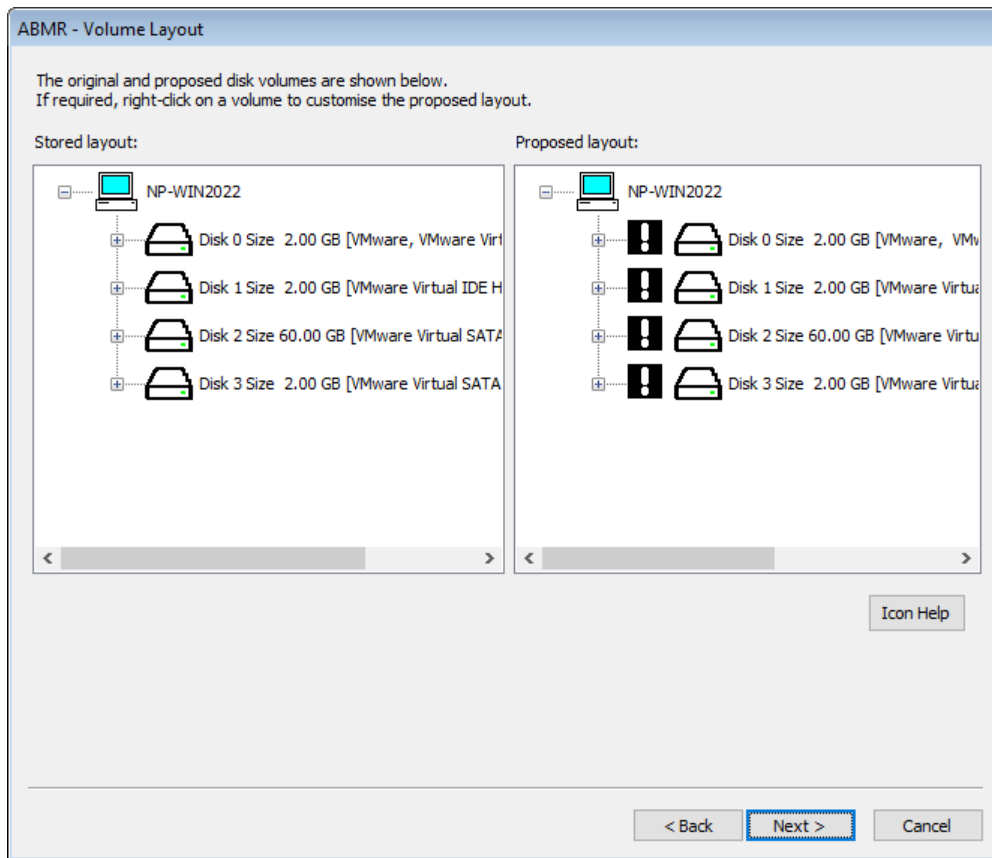
There are certain constraints with this release of Storage Pool support.

- Storage Pools and virtual disks are recognized by ABMR WinPE5, so if you boot a target system that has them, then WinPE5 will see them and mask out the “real” disks resulting in only the virtual disks being shown.
- The use of NVMe type disks when using VMWare WorkStation is not recommended when using Storage Pools.
- Physical disks used in Storage Pools should have minimum size of at least 8 GB.
- Only the ABMR WinPE5 DR environment is supported for recoveries of Storage Pools.
- During the Volume Layout phase you can right-click on target disks and swap them etc, but you can't swap a Storage Pool virtual disk with a real disk or vice-versa.



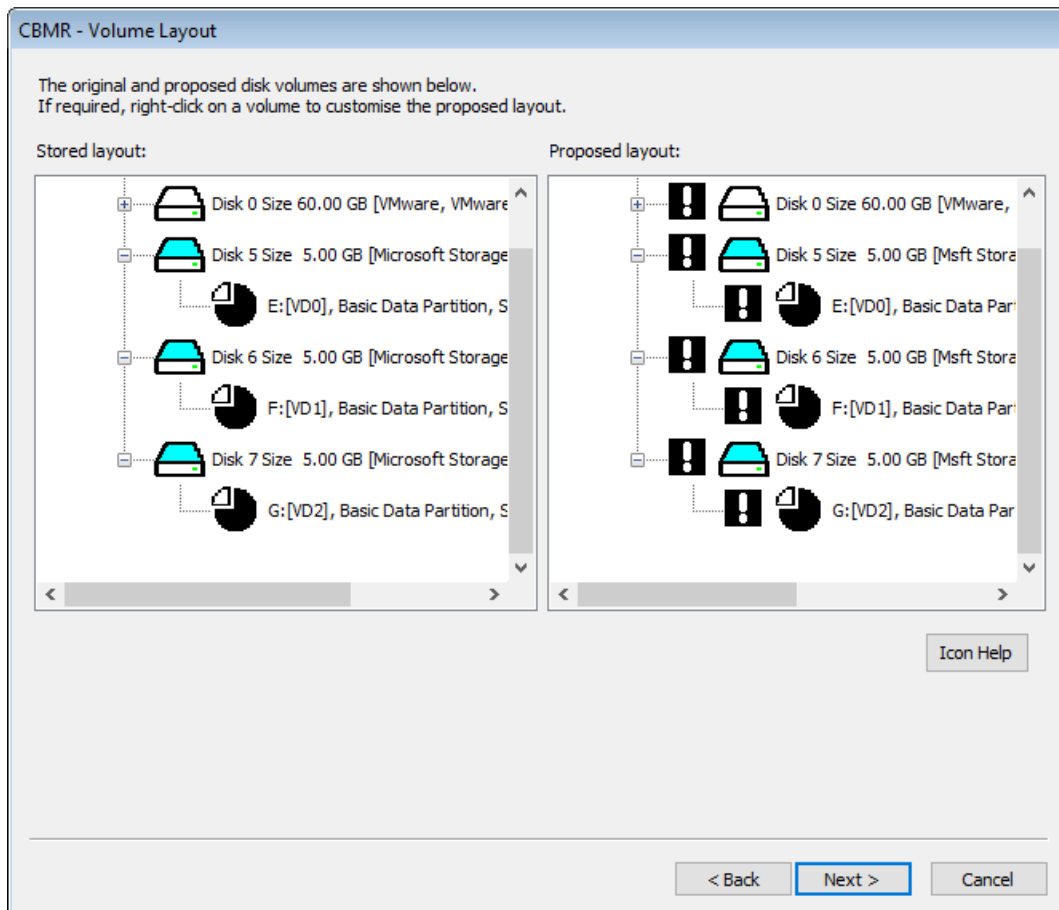
6.2.2.4 Confirm Volume Layout

The next step in the **Automatic recovery** shows a list of the disks and partitions to be recovered.



For a system with Storage Pools the Volume Layout will resemble this example:





The left-hand panel of the dialogue shows the original disk layout and partitions. The right-hand panel shows how the recovered disks will be partitioned after the recovery.

If you wish to quickly enable the partitioning of all target disks click .

If you wish to quickly disable the partitioning of all target disks click .

A white tick box next to a disk signifies that the disk and its underlying partitions will be left intact. Placed next to a partition/volume means that the corresponding partition/volume **WILL NOT** be partitioned.

A white exclamation mark placed next to a disk means it **WILL** be partitioned during recovery. Placed next to a partition or volume means that the corresponding partition/volume **WILL** be partitioned.

A black/white exclamation mark placed next to a disk means at least one partition/volume **WILL** be partitioned.

A white box indicates that the disk will be completely ignored during the recovery.

There are 3 disk types available:





indicates a standard disk

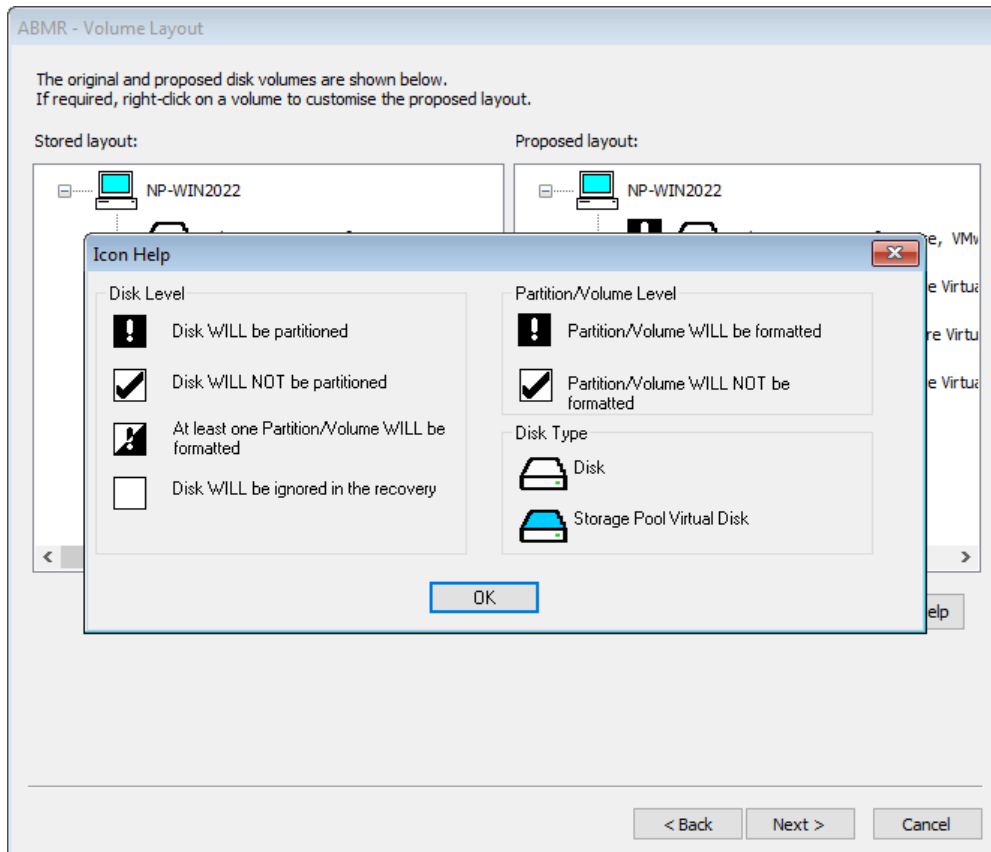


indicates a dynamic disk



indicates a Storage Pool virtual disk

Click on the [Icon Help](#) button to display a summary of this:



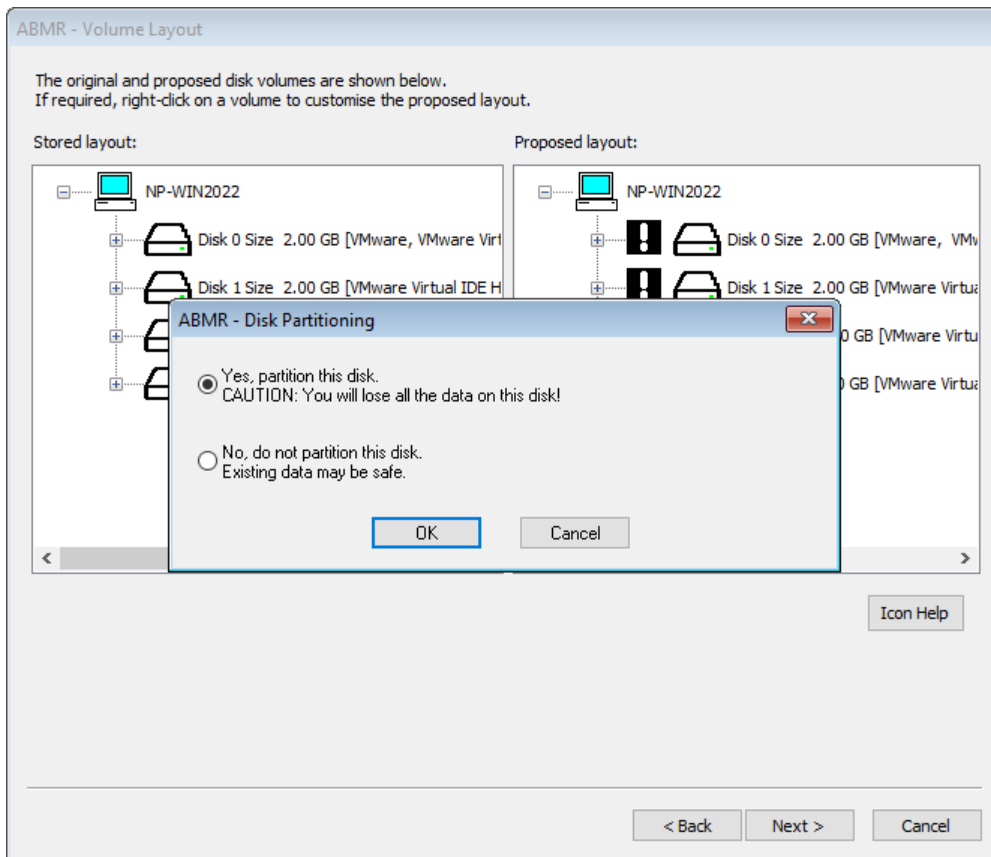
When the recovery is to the original system, the contents of both panels will look similar if the number of disks is the same. Possibly the disk sizes will be different.

When performing a recovery to a dissimilar system, the disk mapping can be much more complex. Some of the criteria used to judge the disk mapping are:

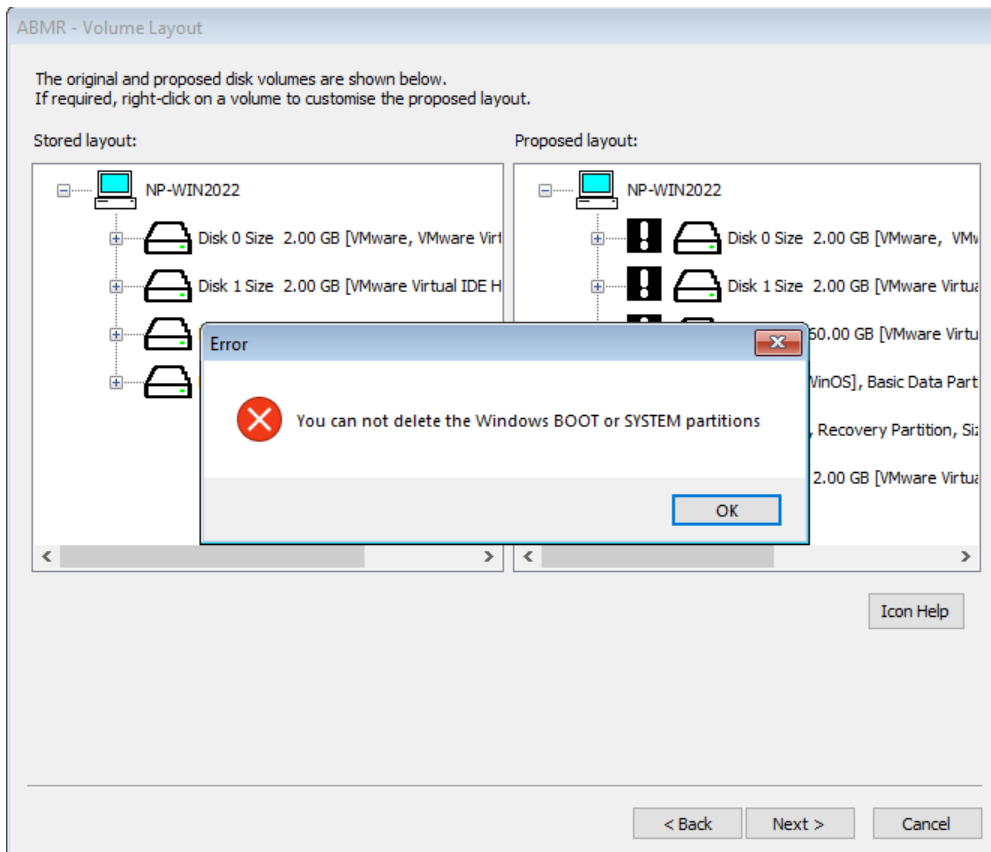
- *disk geometry*
- *disk capacity*
- *if currently formatted, the disk signature*

You may right-click on any disk shown in the right-hand panel to select whether the disk will be partitioned or not.





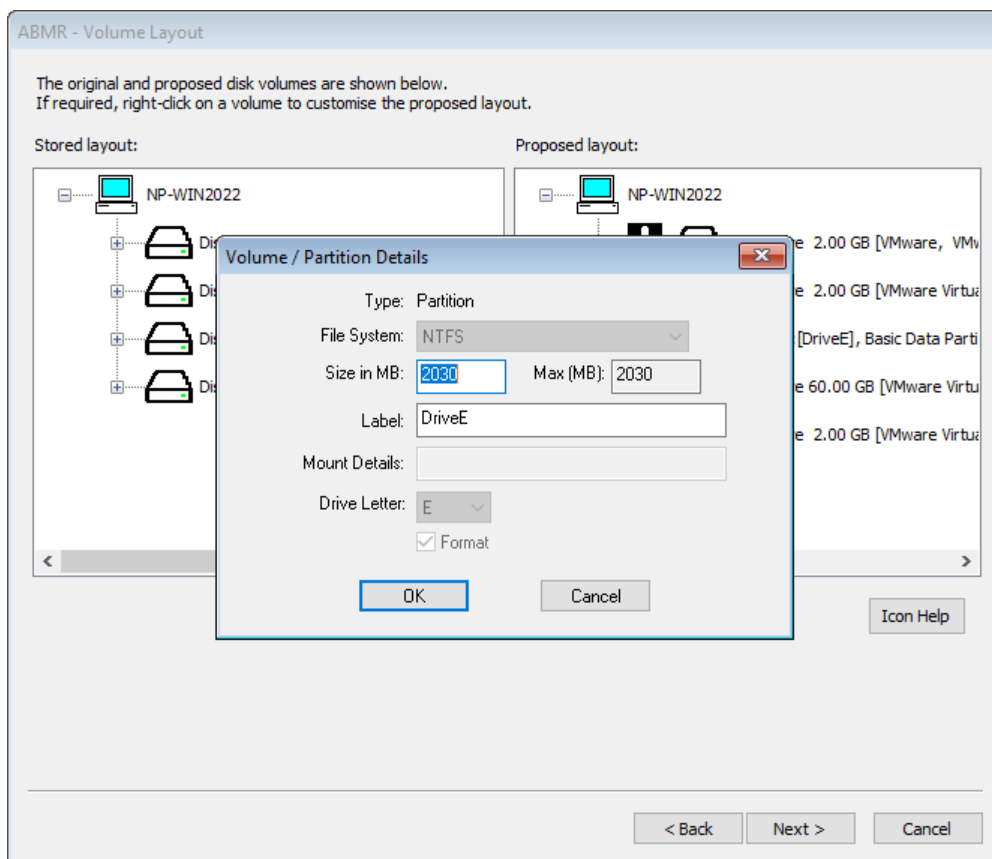
Any attempt to incorrectly turn off formatting will result in this error:




You may also right-click on a partition to allow you to selectively modify the partition



parameters.

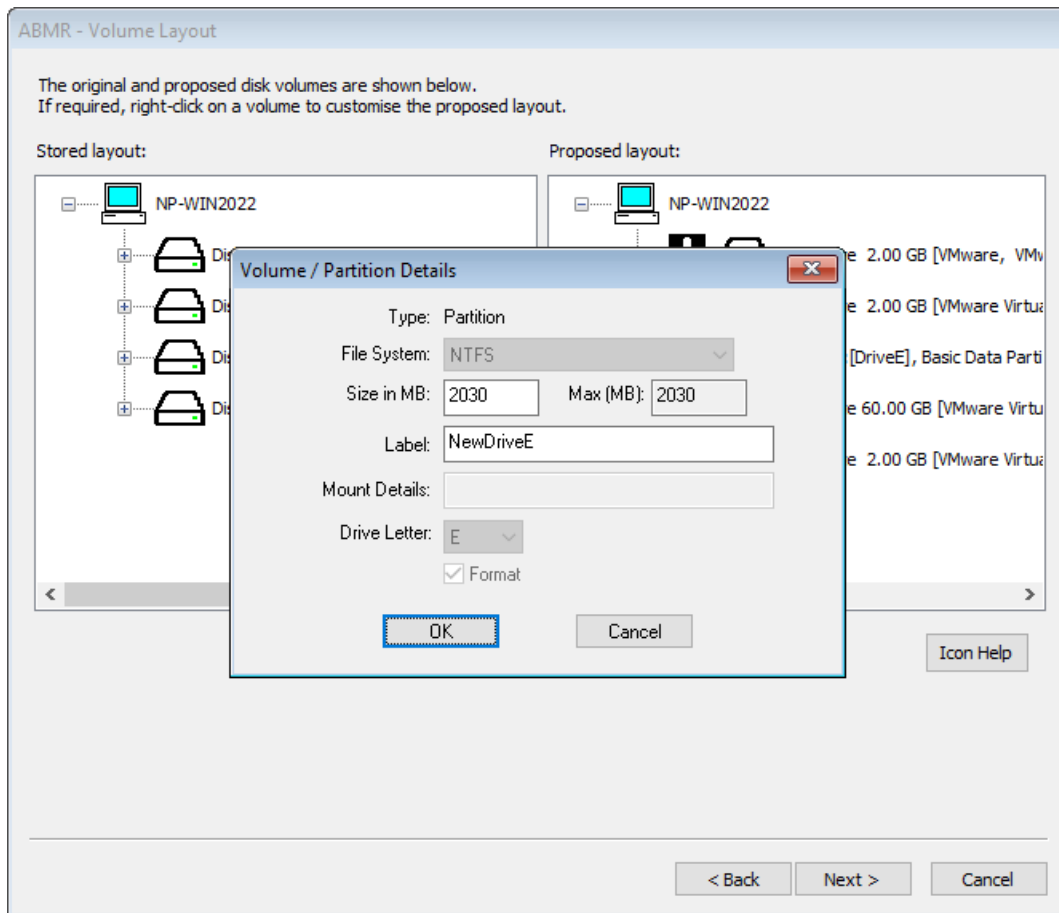


You may **Modify** the following partition parameters:

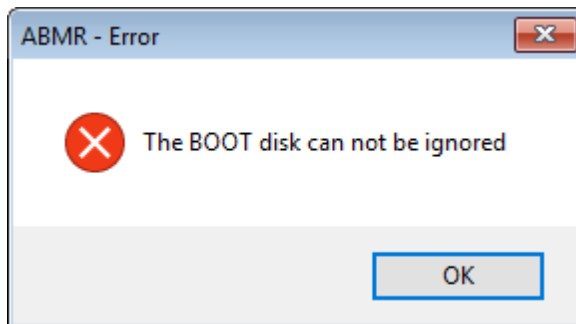
- size in MB (only if disk is shown with a )
- label
- format (yes/no)

The screenshot below shows an example:





If you attempt to either not format or delete a Windows system partition, an error such as this will be displayed:



At this stage, nothing has happened to the disks. Press **Next>** to continue with the recovery.

6.2.2.5 Select Volumes To Restore

The next step prompts for the volumes to restore.

When no Point-in-Time is specified the last full backup and anything incremental that is not a full backup is recovered. This means the minimum that is restored is the last full backup of the Windows drive plus the SystemState. If the user selects other filesystems to restore then they are restored as well.

Put a tick against each volume that should be restored:



ABMR - Select Volumes to Restore

At least one System and one Boot partition must be selected in order to recover your machine. This may be the same partition. You can select additional drives to be restored by ticking the check box next to the drive.

Drive Letter	Boot	System	Name	File System
<input checked="" type="checkbox"/> C:	Yes		C:	NTFS
<input checked="" type="checkbox"/> E:			E:	NTFS
<input checked="" type="checkbox"/> F:			F:	CDFS
<input checked="" type="checkbox"/> G:			G:	

Select All Deselect All

< Back Next > Cancel

Note: the system and boot partitions (even if on different partitions) will always be restored by default.

Click [Next>](#) to continue to the next step.



6.2.2.6 Clone Settings

Use this dialogue to change the recovered system's **hostname** and **IP addresses** if required. Select to use either DHCP or enter a valid static IP address.

ABMR - Clone Settings

Do not change any settings on this page unless you wish to change the identity of the recovered machine. For example when performing a cloning operation.

Change the computer's NetBIOS name on reboot.

NP-WIN2022 ----> NewNetBIOS

Change the computer's host name on reboot.

NP-Win2022 ----> NewHostname

Change the IP address of this adapter on reboot.

Physical Address: 00-0C-29-66-43-3D

Intel(R) 82574L Gigabit Network Connection (Up)

Use DHCP Use DHCP

IP Address: 10 . 10 . 11 . 80 ----> 10 . 10 . 11 . 80

Netmask: 255 . 0 . 0 . 0 ----> 255 . 0 . 0 . 0

Gateway: 10 . 0 . 1 . 100 ----> 10 . 0 . 1 . 100

< Back Next > Cancel

You may change the IP address for each NIC interface independently. NICs that are currently connected to a network are tagged with **(Operational)**.

If you wish to retain the current hostname and IP addresses leave the fields at their default values and select **Next >** to continue to the next section.

Note: When you click on the "Next >" the button will change to "Finish", when you click on "Finish" the restore will start. If dissimilar hardware is detected, then when you click on "Next >" the Dissimilar Hardware dialogue will be displayed instead. Click "Finish" on that dialogue to start the restore.

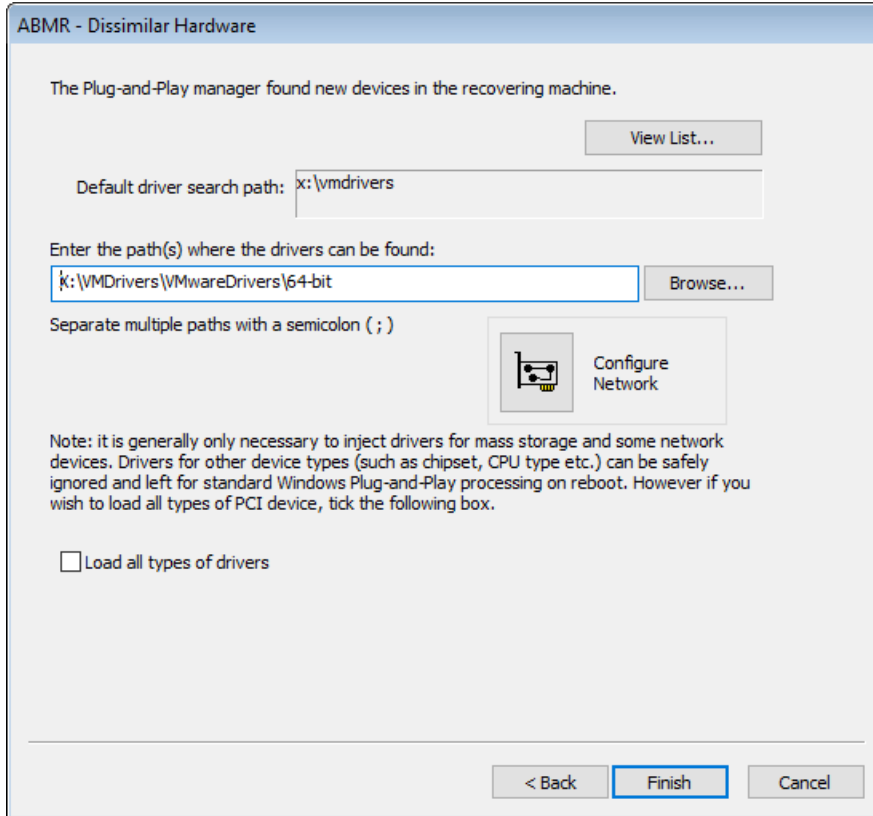
When recovering to a system with a different MAC address (generally during a dissimilar DR), the default IP address settings default to DHCP and not the original IP.

The **Next >** button will change to **Finish**. Click this when ready to continue.

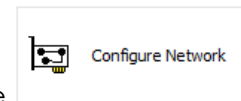


6.2.2.7 Dissimilar Hardware

Next, the DR process performs a check to determine if there are new devices in the recovering machine that were not present in the original system. If this is true, then this is a 'dissimilar' DR and the following dialogue will be shown to allow the user to specify the location of the new driver files for these devices.



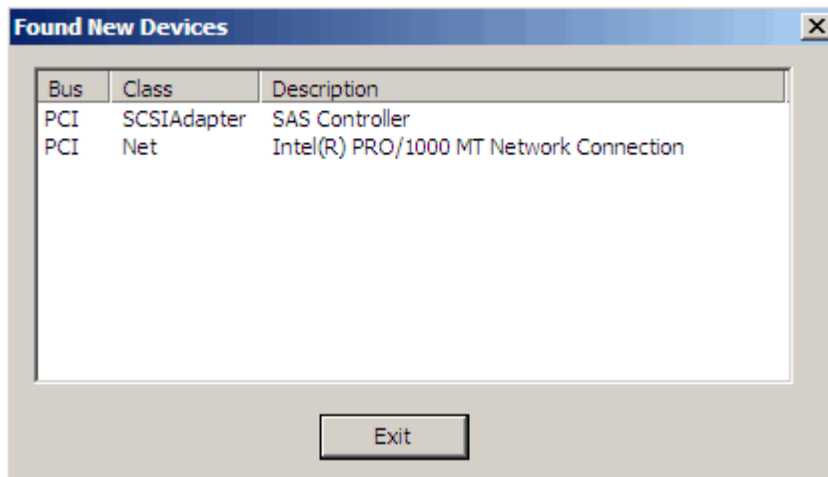
Specify the default path or paths to be searched for the missing driver files. The paths may



be on a local device (eg. a USB disk) or a network share. Use the button if you need to map a network share. In either case, the paths must be accessible to the WinPE5, WinPE10 or WinPE11 environment.

Select [View List...](#) to see a list of the new devices.





Ensure the specified path or paths contain the correct 64-bit drivers for the dissimilar machine. At the end of the DR sequence, the specified paths will be searched for the missing drivers and automatically injected into the recovered system.

By default, it is only necessary to inject drivers for mass storage devices and, in some cases, network devices. The 'Load all types of drivers' tick box will force the DR to look for all drivers in addition to mass storage and network devices. For example, this could include graphics cards, USB and chipset devices, but these are rarely required and not recommended.

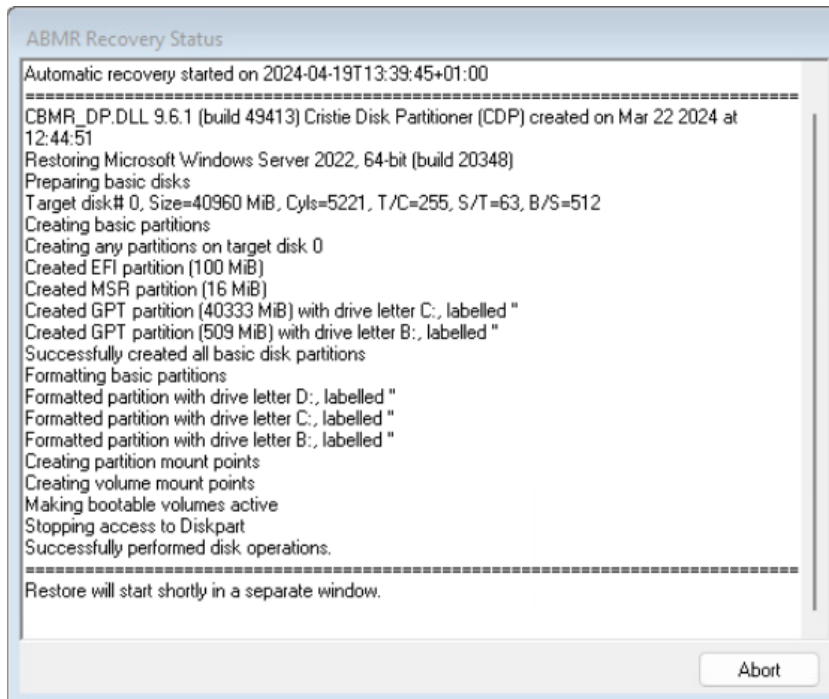
Note that if drivers are not found for the new boot disk then, although WinPE5, WinPE10 or WinPE11 will be able to recover the files to the disk, there is a good chance that it will not boot correctly.

Press **Finish>** to proceed with the recovery.



6.2.2.8 Disk Recovery Sequence

The **Recovery Sequence** begins by preparing the disks selected for the recovery:

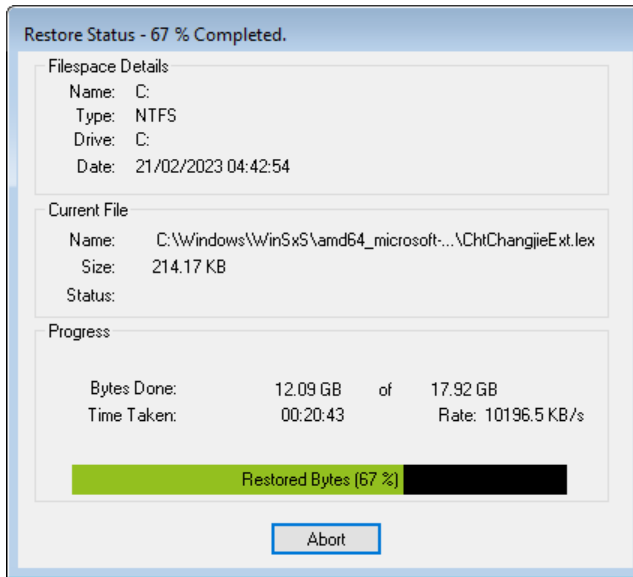


This involves:

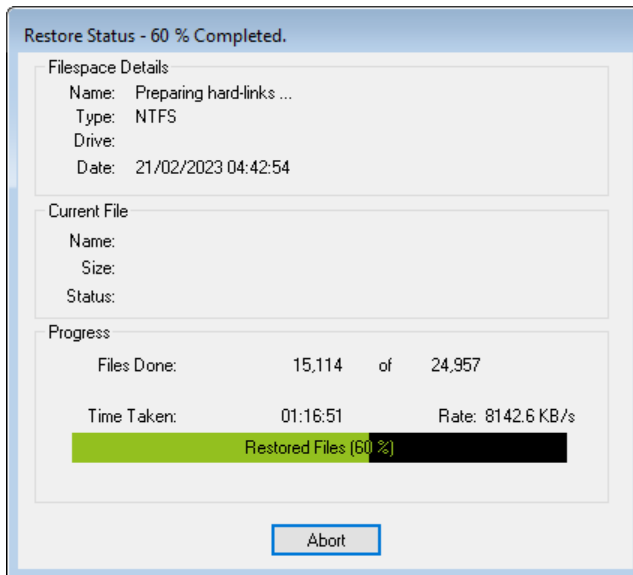
- *disk mapping original layout to new*
- *cleaning (removing any existing disk partitions)*
- *removing any existing dynamic volume databases*
- *re-creating the partitions*
- *converting to dynamic volumes if required*
- *formatting to the required partition type*
- *create partition/volume mount points*
- *make bootable volumes active*

The next step is to recover the data sets to the selected target disks/partitions. A new window appears containing the restore status of recovered files and progress bars indicating how much of the backup has been restored. This display also shows the recovery statistics in terms of time, size and throughput.



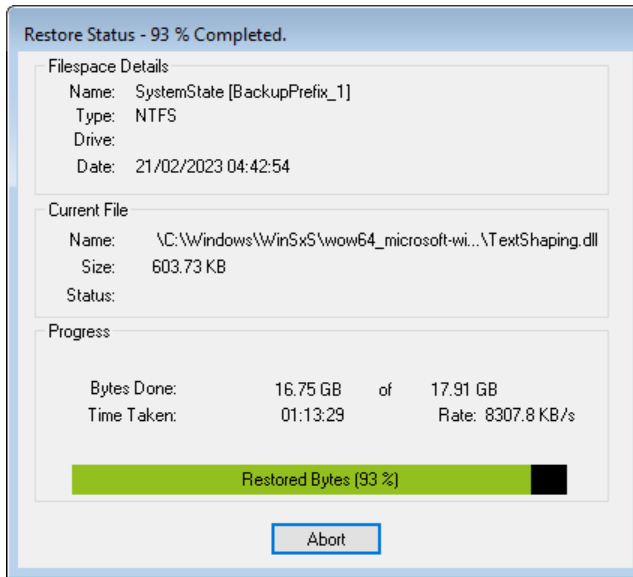


Next OS **hard-links** are restored.



Finally the **SystemState** is recovered.



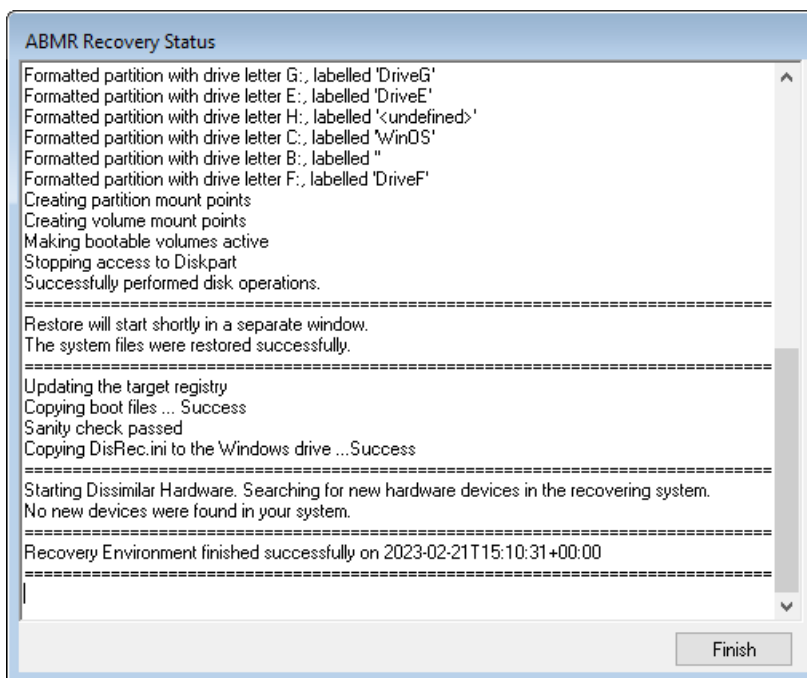


This process may take some time if the backups are large. You may select the **Abort** button to terminate the file recovery process, but this may leave the disk or partition in an unpredictable state which may render it unusable.

If any errors occur during the recovery, an error message will be shown in the window. Refer to the logs post recovery to establish the cause of any error.

The final steps of the recovery are to:

- run a sanity check to determine if all the expected boot files are present on the boot volume
- run a dissimilar hardware check to determine if new drivers are required for new boot devices



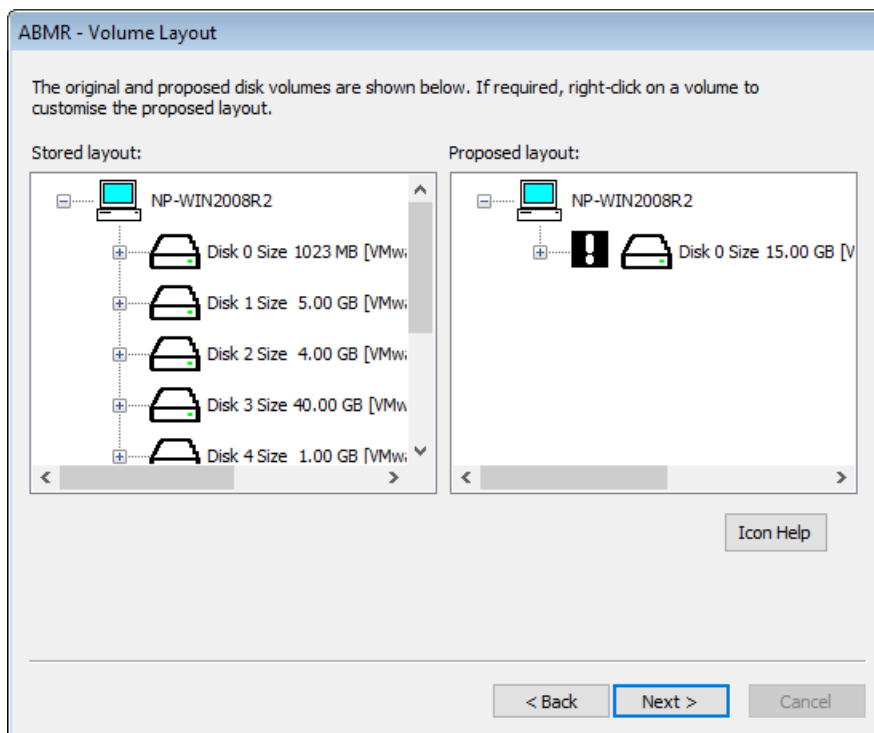
Finally, click **Finish** to return to the **Recovery Environment** main menu. At this point, you

may want to view the recovery logs and perhaps copy the logs to a local device or remote share before selecting to reboot. If you have configured the logfile save path from the first step the logfiles will be automatically saved anyway.

Note: recovery logs are also saved to the recovered system to the ABMR installation sub-folder 'Temp' (e.g. "C:\Program Files\Cristie\ABMR\Temp").

6.2.2.9 Disk Scaling

In situations where the target system has fewer or smaller disks than the original system, *Disk Scaling* will come into effect.



The above example shows a recovery from an original system with 8 physical disks, to a target system with only one disk. The target disk is also much smaller than the original system disk.

In this scenario, ABMR will select as many disks to recover as possible (in this case only one disk - the boot disk). In addition, it will scale the partitions down in proportion to their original size and occupancy. This can be complicated by having, say, mirrored dynamic volumes when the mirror will need to be broken - if only one disk exists on the target (or it has been tagged as not to modify).

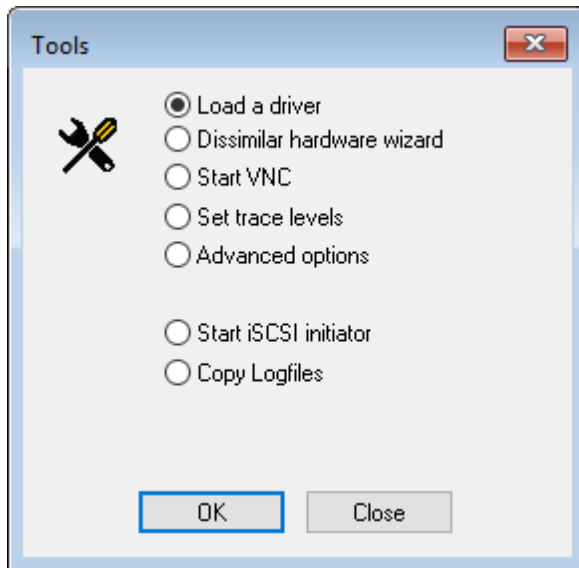
Note 1: the Volume Layout dialogue will only show disks in the left hand panel that can be removed.

Note 2: during a recovery to a system with larger disks, the partition sizes will remain the same as the original by default. However, in this case, it is possible to increase partition size manually during the recovery by right-clicking on the partition icon and selecting [Modify](#).



6.2.3 Tools

There are a number of tools that can assist with the recovery process. They are all collected under this command button:



The options available are:

- *Load a driver*
- *Dissimilar Hardware Wizard*
- *Start VNC*
- *Set trace levels*
- *Advanced options*
- *Start iSCSI initiator*
- *Copy Logfiles*

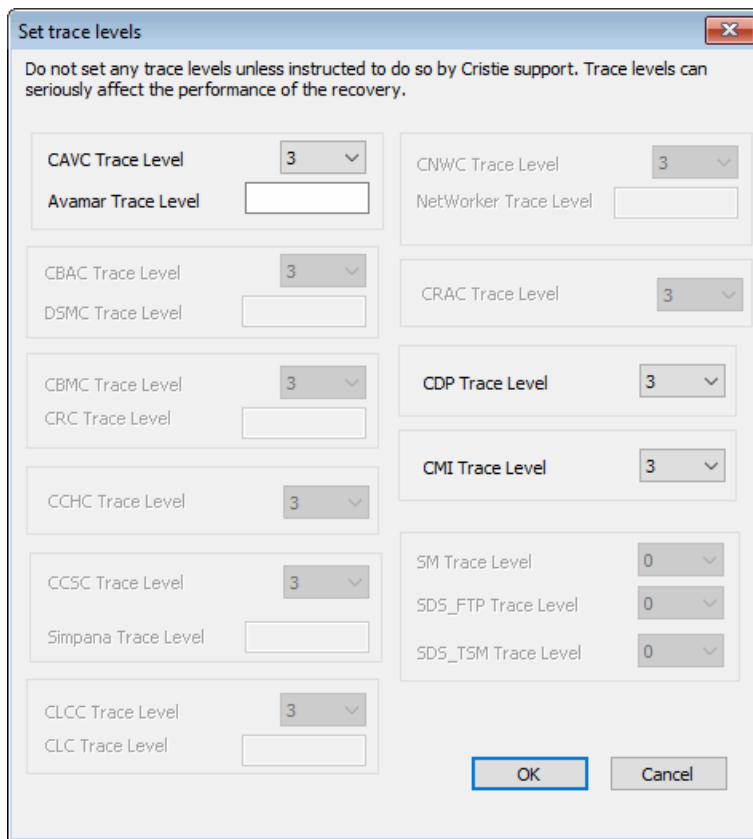
Load a driver allows a new mass storage or NIC driver to be injected into the running booted WinPE5, WinPE10 or WinPE11 DR environment. This would be used, for example, to support a mass-storage (disk) device not currently supported out-of-box. This should be done prior to starting the DR sequence.

The **Dissimilar Hardware Wizard** will allow drivers to be injected into the recovered system when the target hardware has different devices from the original (eg. RAID controllers). Normally, this will be done automatically as part of the DR sequence and will not need to be run manually.

Start VNC will run a VNC server within the WinPE5, WinPE10 or WinPE11 environment, allowing external VNC clients to remotely connect during the DR session. The start process will provide you with the current IP address of the WinPE5, WinPE10 or WinPE11 environment, which you will need to specify in the VNC client.

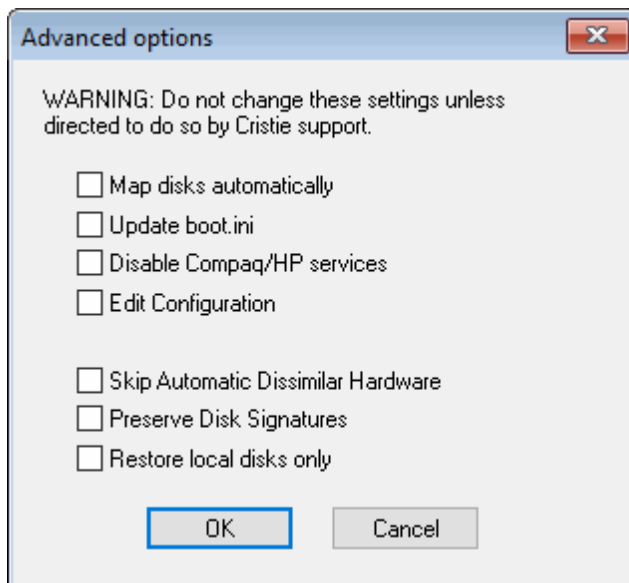
Note: the VNC connection is also password protected. The VNC feature is intended for diagnosing DR problems under the guidance of Cristie Support, who will provide the password upon request.

Set trace levels allows the DR log file trace to be increased or decreased as required:



It is recommended that the trace levels are only changed when advised to do so by Cristie Support staff. This is because they could have a severe impact upon the performance of the backup restore process.

Advanced Options should only be selected when advised to do so by Cristie Support staff.



Start iSCSI initiator - please contact Cristie Support if you wish to use this feature.



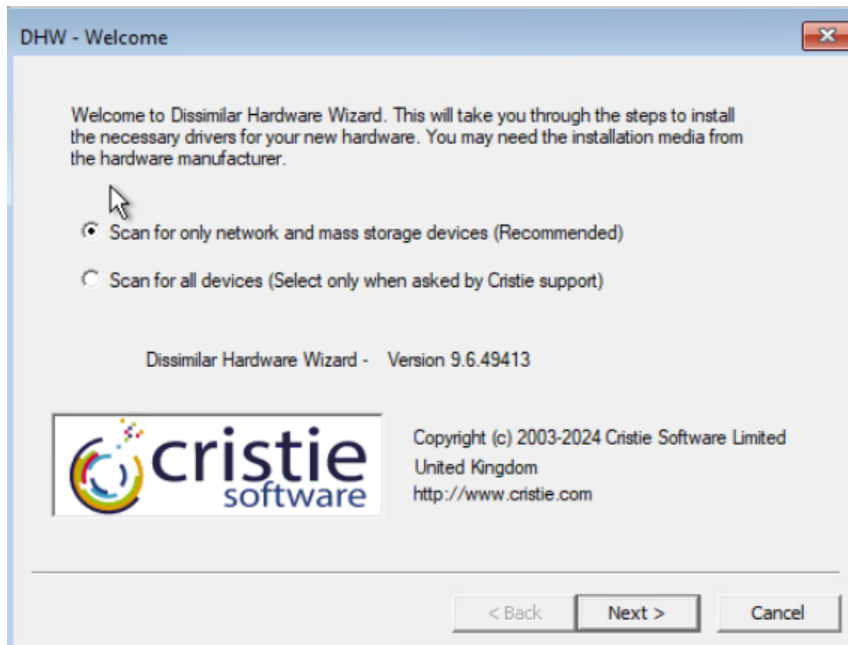
Copy Logfiles allows all the current logfiles created as part of the recovery process to be zipped up and copied to a network share or local device (such as a USB flash drive).

6.2.3.1 Dissimilar Hardware Wizard

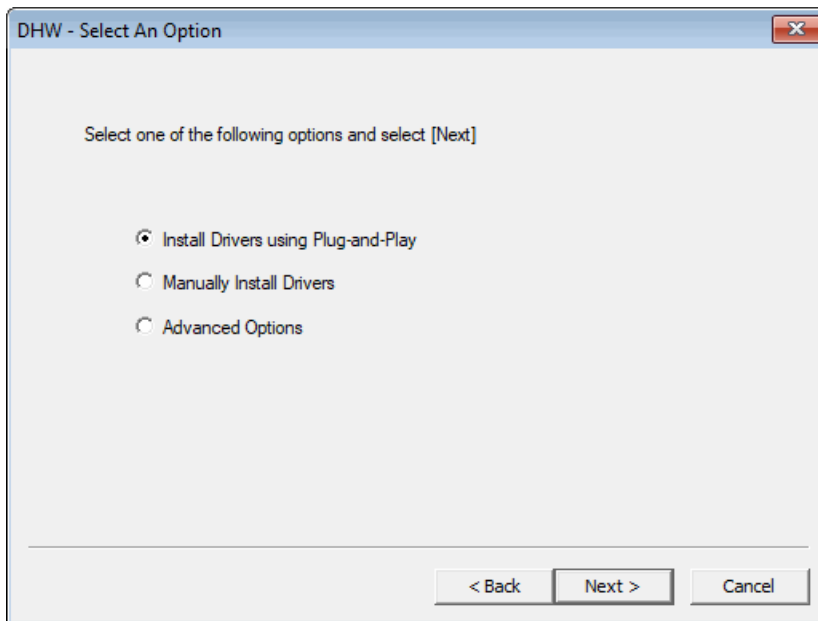
A restore to dissimilar hardware is normally detected during the Automatic or Manual DR sequence. Drivers will be injected automatically at the end of the restore sequence if a source location has been provided. However, if this process has failed for some reason, or additional drivers are required to be injected into the recovering machine, then this **Dissimilar Hardware Wizard** (DHW) tool is provided.

Note: it is only necessary to load the drivers for the hard disk, NIC and, rarely, the HAL. Drivers for the hard disks and NIC can be determined by Plug-and-Play (PnP) and may be readily identified. However, changes required in the CPU model via a change in HAL cannot yet be determined by PnP - these need to be loaded manually.

If you wish to scan for just Mass Storage and Network devices (the minimum required to boot a dissimilar system), select **Next>** to continue to the next step of the Wizard. This is the recommended option. Under the guidance of **Cristie Support**, you may be asked to scan for all devices. In this case, tick the **'Scan for all devices'** box before selecting **Next>**.

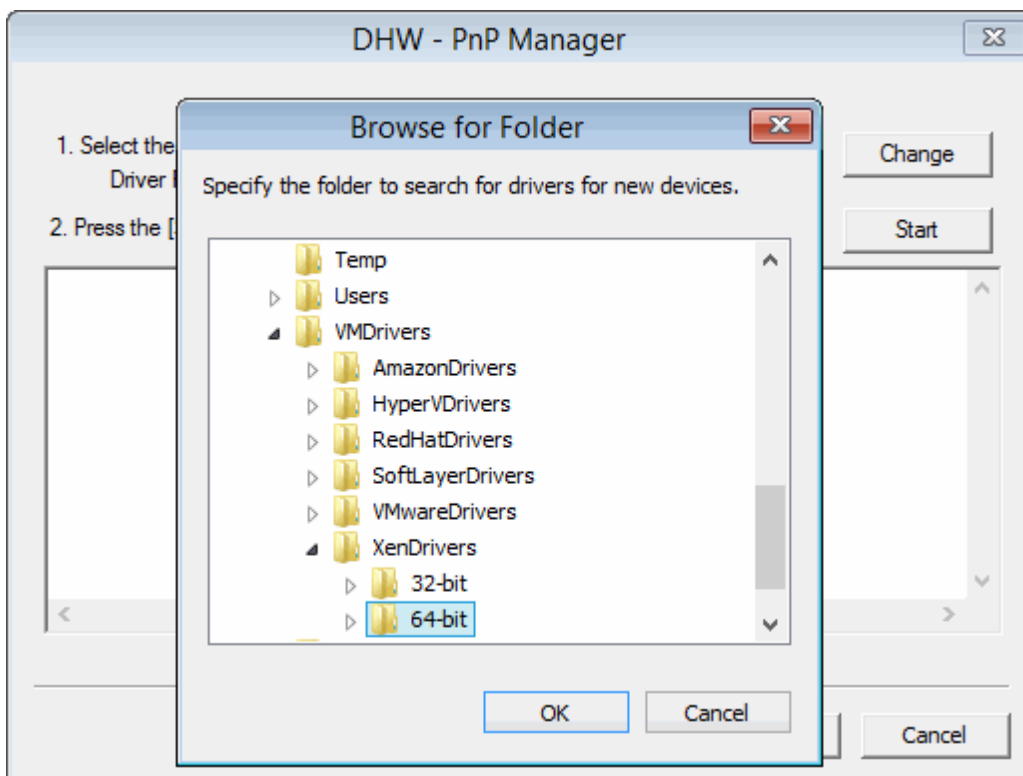


Select the **'Install Drivers using Plug-and-Play'** option:



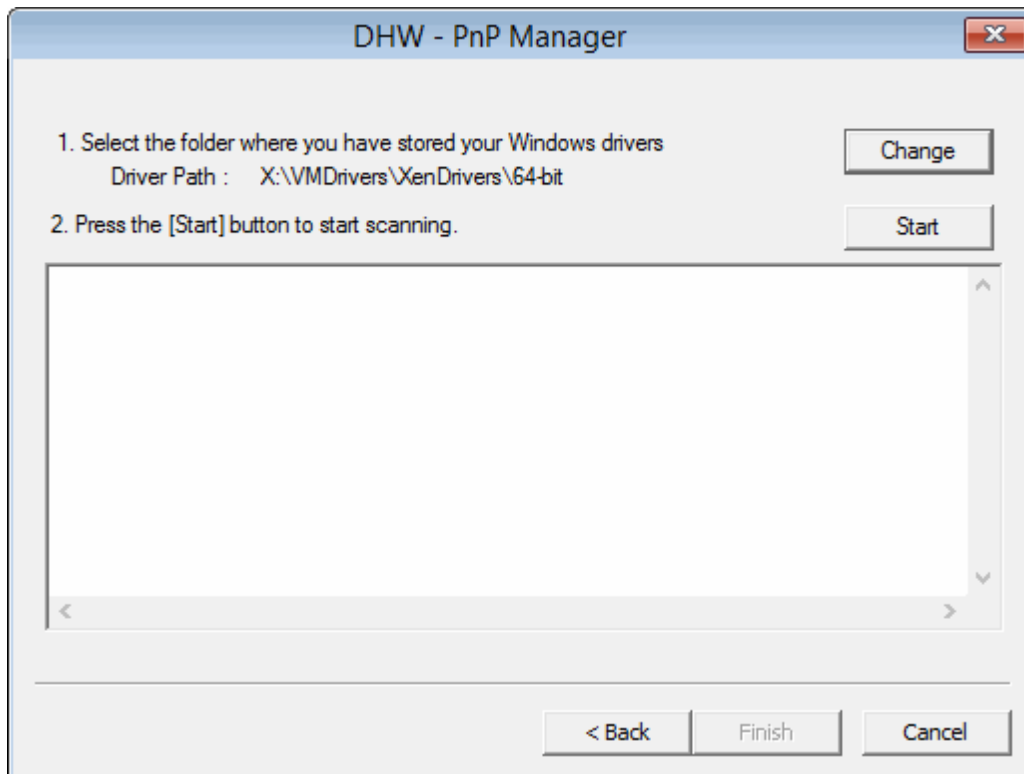
Install Drivers using Plug-and-Play

The window appears empty to start with. The set of drivers located on the recovery CD is the default choice, but in practice they should not be used. Instead, change the driver search path to where you have actually located your drivers (for example, to a network share or another CD) with the **Change** command button.

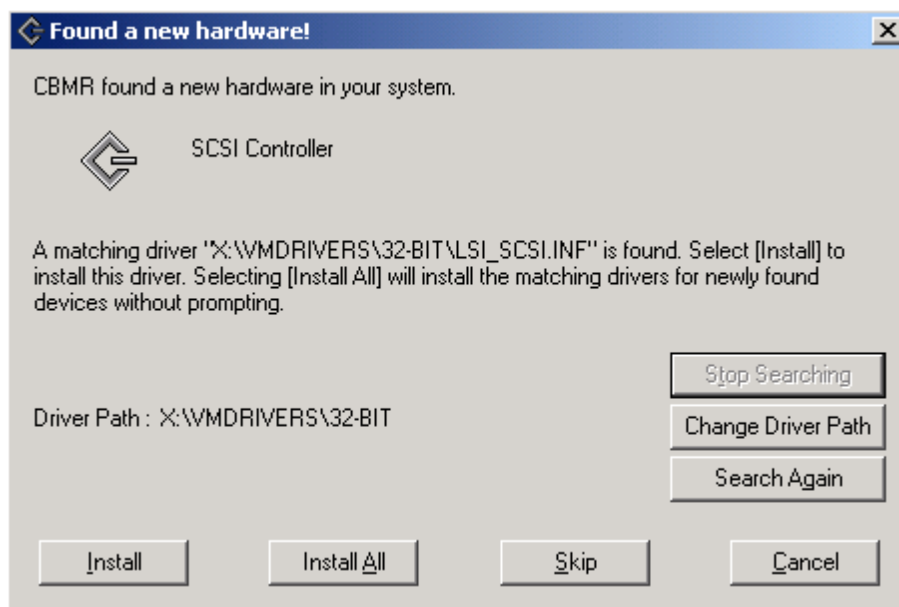


In the example above, the driver search path is changed to the VMware drivers on the WinPE boot CD. Begin the PnP driver detection by clicking **Start**.





The process checks the devices that it can detect and when it finds one that does not have a driver loaded, it will offer to install it. The example below shows an LSI SCSI device being detected:

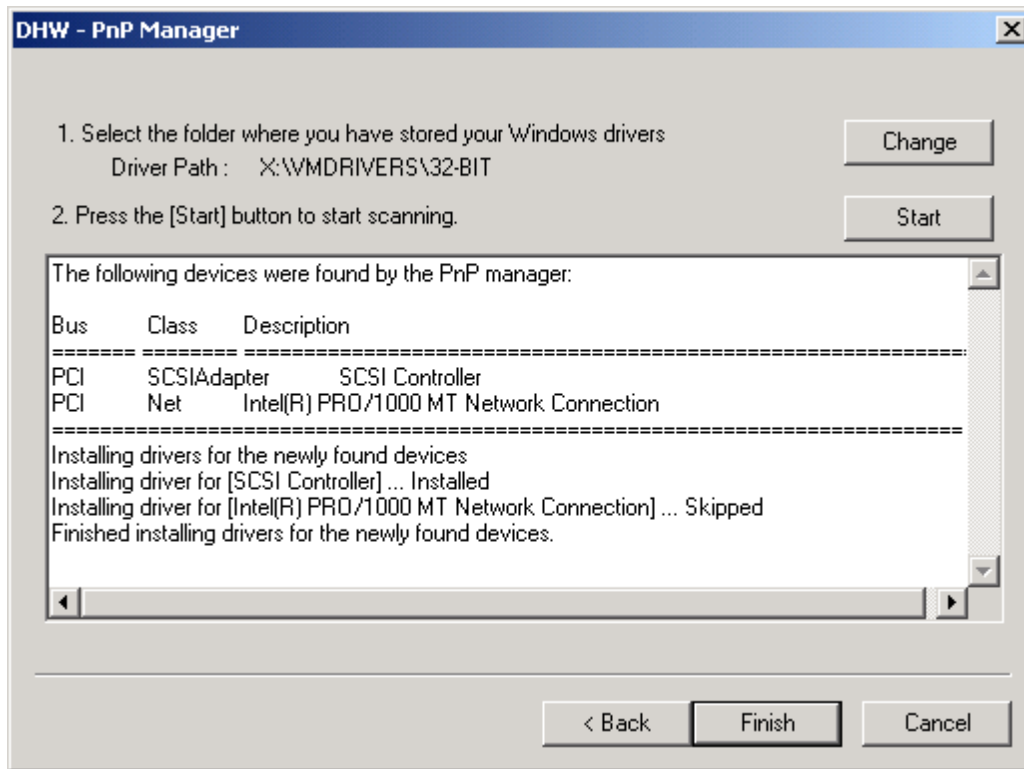


If you are satisfied that the found driver path is correct, click on **Install** and the driver will be installed. The device scan will continue and may find, for example, other mass storage or network devices. Follow the steps above to install.

Drivers are usually .sys files. The .inf files define which driver files need to be loaded for a given device. You may need to confirm the location of the driver files for each device, or possibly find the path where they are stored. When you have the correct path, click on **OK** and the Wizard will look for more.



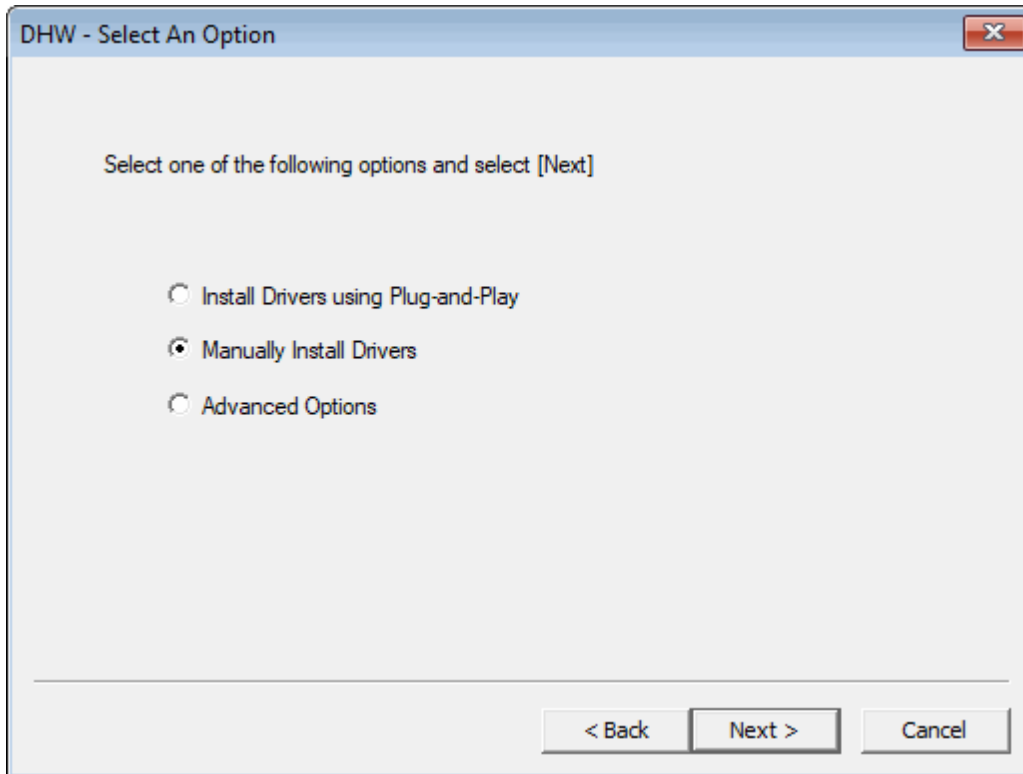
Once all of the drivers of the detected devices have been processed, the Wizard will indicate that the installation has finished. Click on [Finish](#) to proceed.



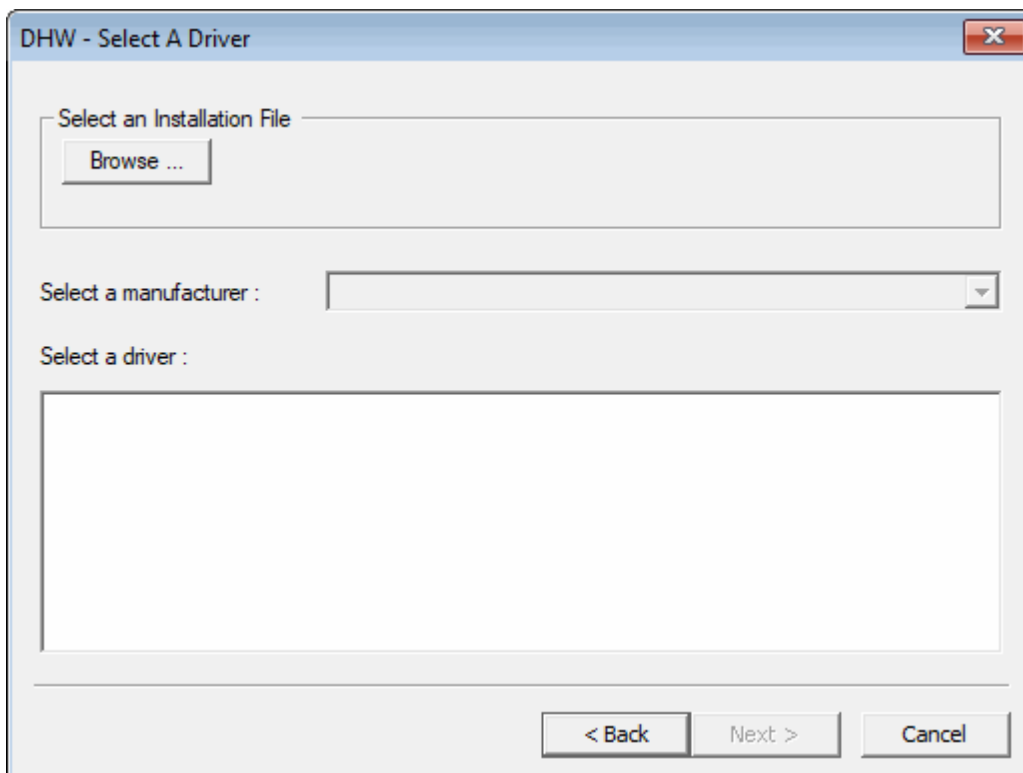
Manual Installation

Typically, you would only manually install a driver for a CPU/HAL change. Select '**Manually Install Drivers**' from the option menu:



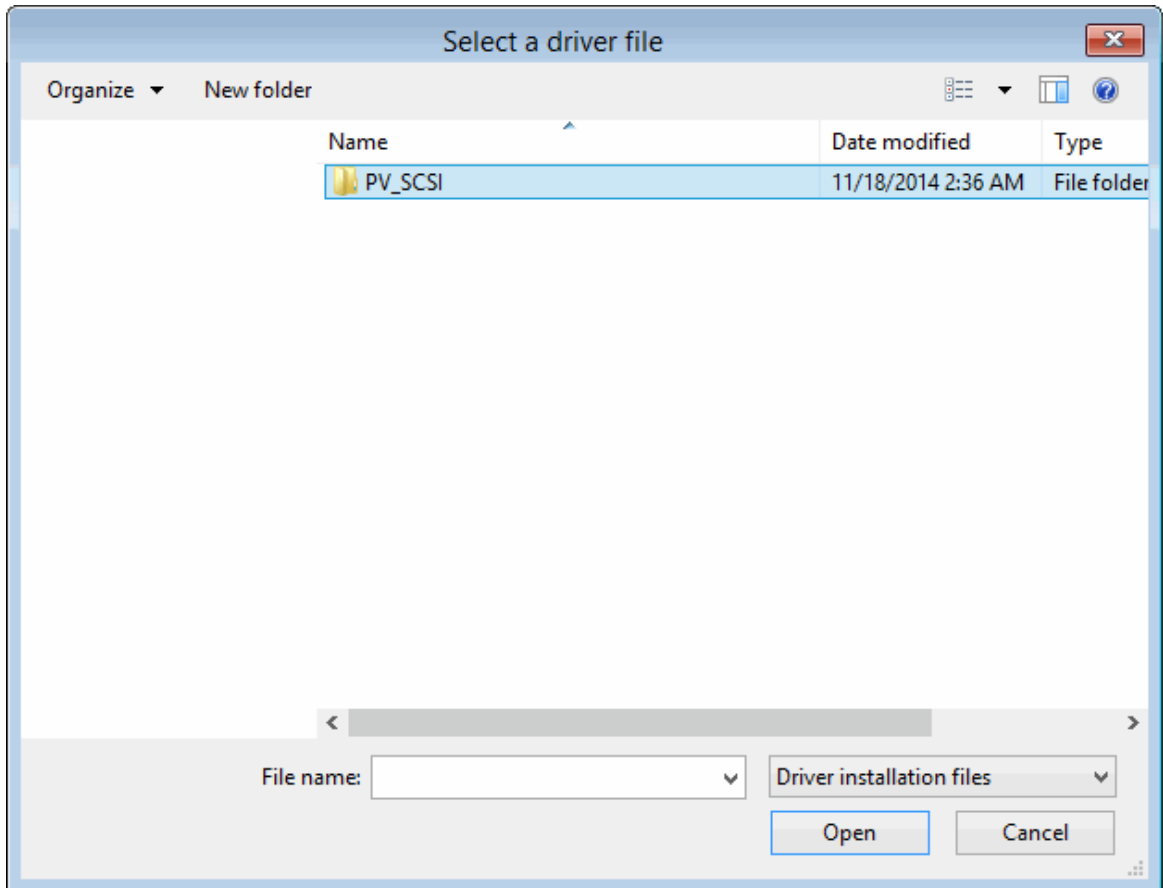


Then select [Next>](#).

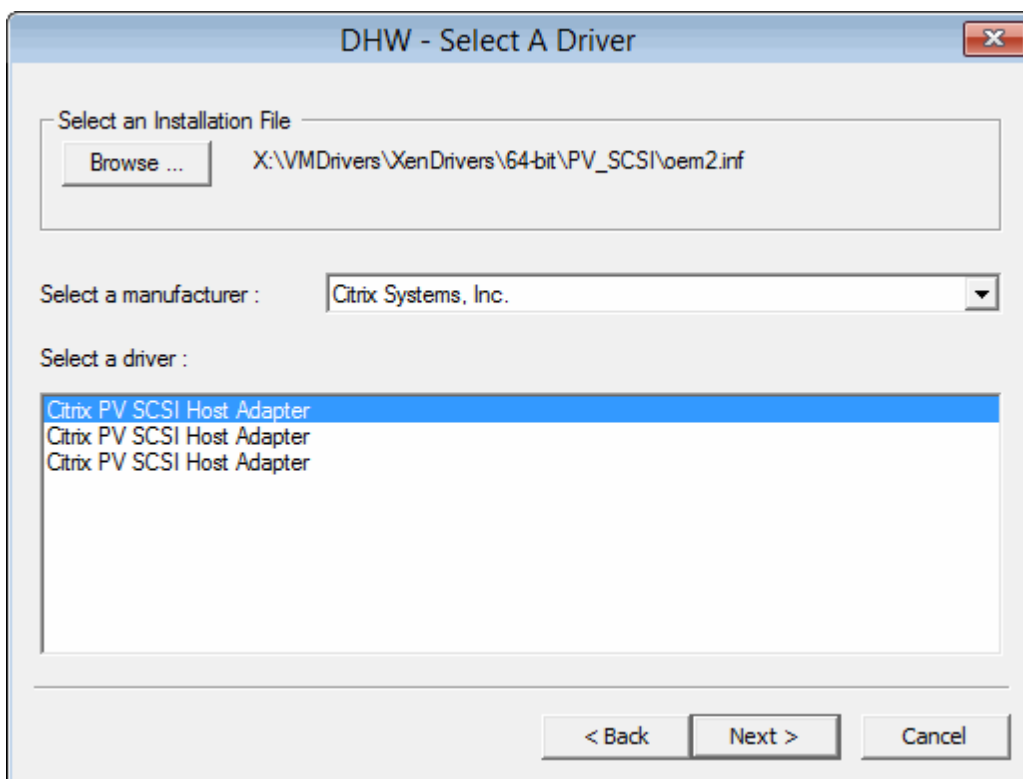


Select [Browse...](#) to locate the driver or HAL file you need by browsing to the appropriate folder that holds the .inf file. If you need to load the driver from another machine, then you can browse to a share on that machine and then to the appropriate folder.





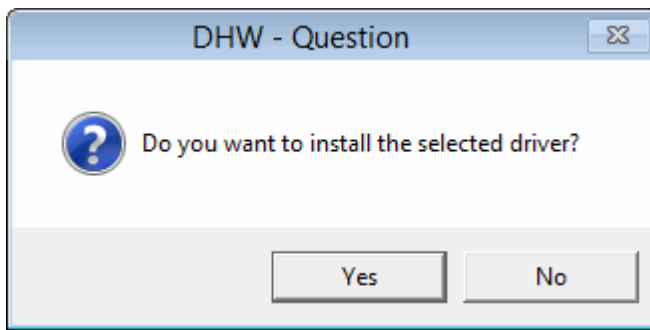
Here we are selecting the Citrix PV SCSI controller driver:



The Wizard allows you to select drivers that are grouped by manufacturer. Select the

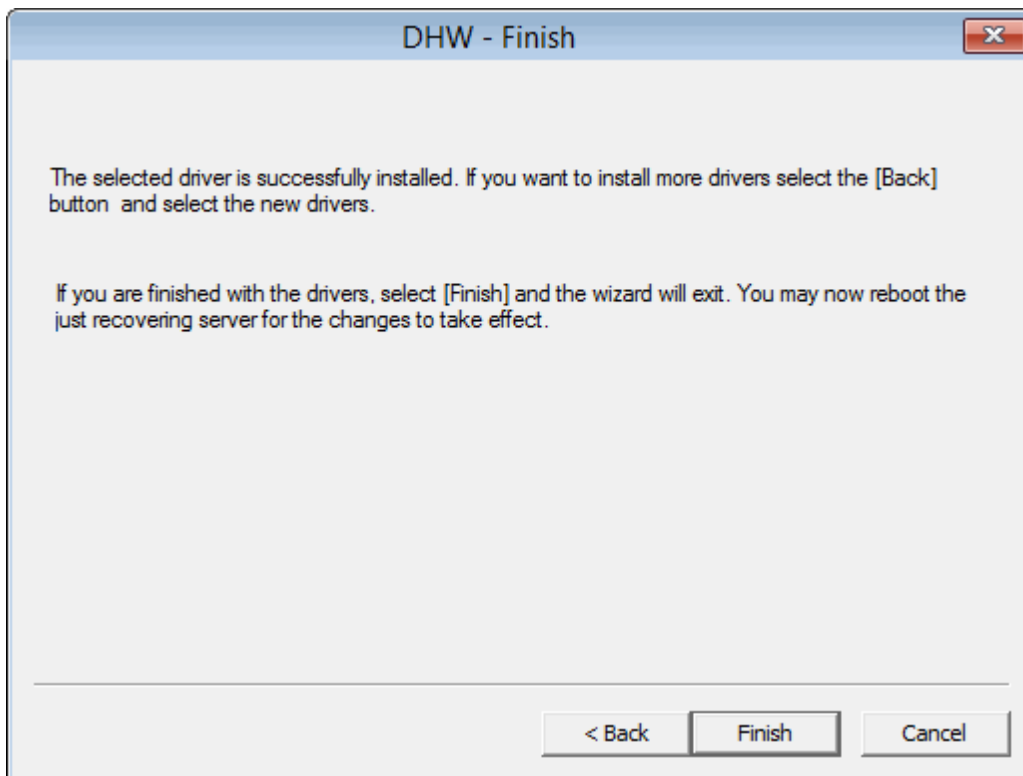


actual driver that you wish to install and click [Next>](#).



After you confirm the selection, the Wizard determines which files need to be installed. You are given the opportunity to change the location from which they are loaded if required..

When the drivers have been installed, the Wizard allows you to go back to install another device driver or [Finish](#) the process.



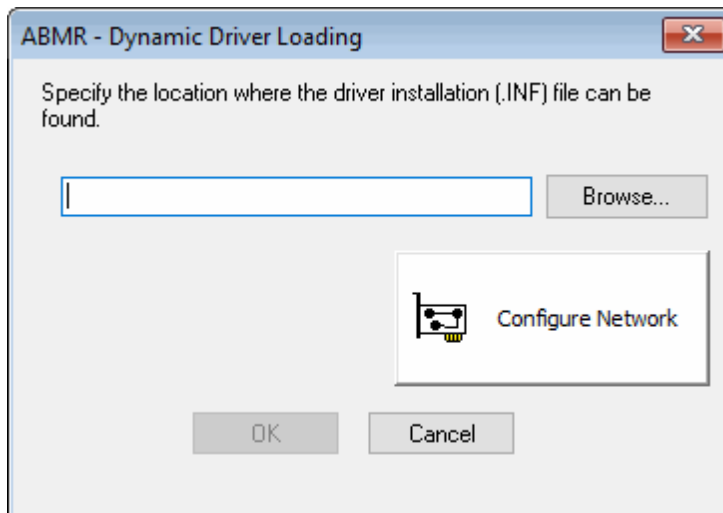
6.2.3.2 Load a Driver

This option allows a new **Mass Storage** or **Network Interface card** driver to be loaded into the WinPE5, WinPE10 or WinPE11 environment. Use this when WinPE5, WinPE10 or WinPE11 does not have a built-in driver for your hardware.

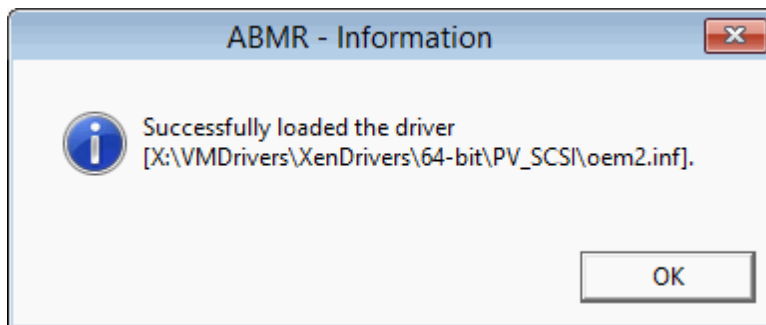
For example, if the DR environment does not show any disks to be recovered, you can inject a new mass storage device driver for the device and retry the DR Wizard.

You will be prompted for the location of the driver INF file. Use the [Configure Network](#) button to map a network share if necessary:





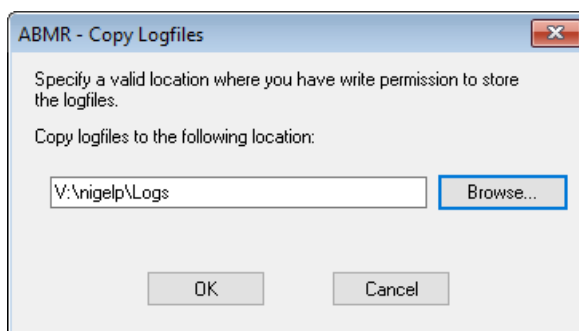
The INF file and other associated driver files (such as the .SYS file) can be located on a CD, USB device or a network share. The following confirmation dialogue is displayed if the driver is loaded successfully:



6.2.3.3 Copy log files to removable media or network location

Since all log and error files generated during the recovery are only transitory (ie. they are lost as soon as the Windows WinPE5, WinPE10 or WinPE11 environment exits), this option allows you to copy the files to a local device or remote network share for permanent record before booting the recovered system.

Use the **Cristie Network Configurator** utility to setup a network share first. All the files are compressed into a single ZIP file so that they can be easily sent to Cristie Support when required.



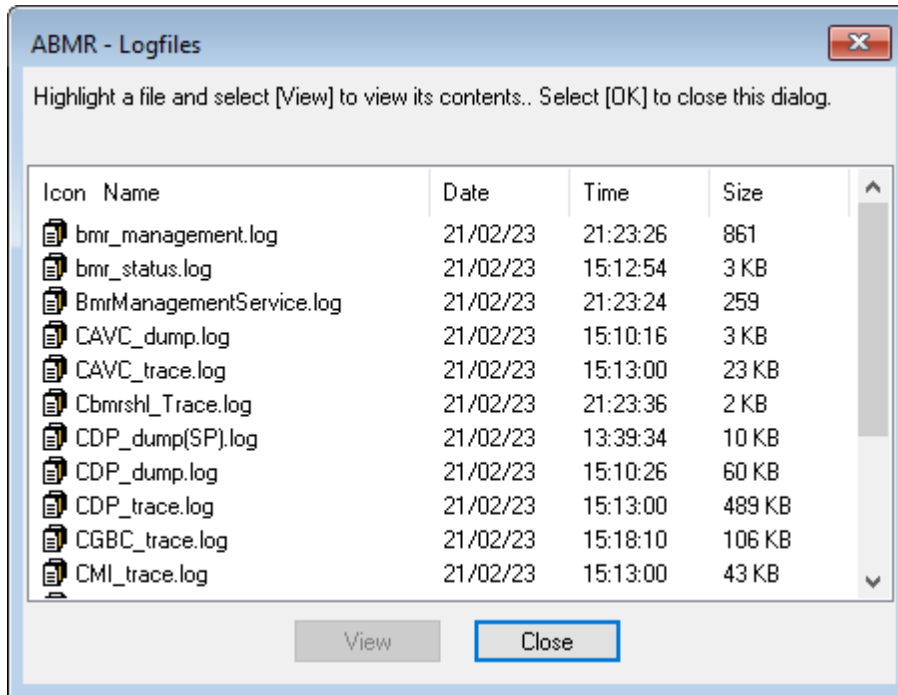
The example shows files being copied to a network share V:\nigelp\LOGs.



Note: the logs are automatically written back to the recovered system after a successful recovery. They are saved to the ABMR installation sub-folder 'Temp'.

6.2.4 Show a list of log files for viewing

This main menu option allows the log files produced during the recovery to be viewed using Notepad. Normally, viewing this information is only required to diagnose a problem with the recovery.



The important files are (this is not an exhaustive list):

avagent.log - output from the Avamar recovery agent.

bmr_status.log - remote VA status log. Use by the VA during automated recoveries.

bmr_management.log - remote VA management log, Used by Cristie Support.

BmrManagementService.log - remote VA management log, Used by Cristie Support

CAVC_dump.log - List of Avamar server datasets detected for host system. Used by Cristie Support.

CAVC_trace.log - Trace of dataset retrieval operations with Avamar server. Used by Cristie Support.

cbmrshl_trace.log - contains a summary of the main menu shell operations. Used by Cristie Support for diagnosing shell operations.

cdp_dump.log - contains general information regarding the system BIOS, disk configuration and timezone details of the original and target system.

cdp_trace.log - contains a detailed summary of how the partitions were restored. Used by Cristie Support for diagnosing disk configuration problems.

CGBC_trace.log - Cristie Generic Backup Client log file.

crm_trace.log - contains the Recovery Manager log. Used by Cristie Support.

cdp_trace.log - contains a detailed summary of how the partitions were restored. Used by Cristie Support for diagnosing disk configuration problems.

cnm_trace.log - contains network library information. Used by Cristie Support.

CNM_trace.log - contains network library information. Used by Cristie Support.

CRM_trace.log - contains the Recovery Manager log. Used by Cristie Support.

CRMWizard_trace.log - contains the Recovery Manager log. Used by Cristie Support.

dhw_log.log - contains a summary of Dissimilar Hardware Wizard activities. Used by Cristie Support for diagnosing new driver problems.

discovery_main.log - contains a summary of network discovery activities. Used by Cristie Support for diagnosing network problems.

network.log - contains NIC hardware summary, current network configuration (eg. IP address, gateway IP address etc) and routing table.

PeNetCfg_trace.log - Configure network tool log.

PeRouteCfg_trace.log - Network Routing tool log.

setupapi.log - contains a summary of the Plug and Play devices detected by WinPE5, WinPE10 or WinPE11 as it boots. Used by Cristie Support for diagnosing WinPE5, WinPE10 or WinPE11 driver problems.

Version.log - Used by Cristie Support to determine version of Cristie ABMR software and DLLs deployed.

6.2.5 Cristie Network Configurator Tool

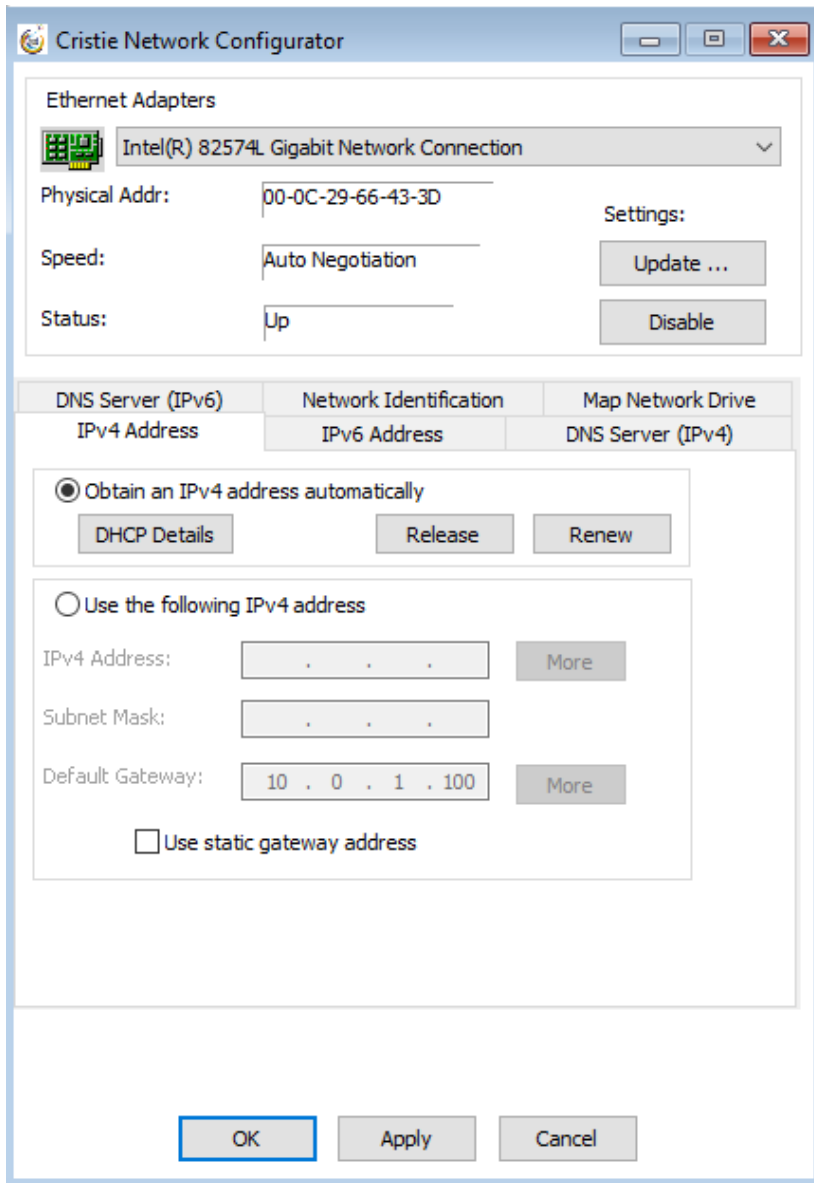
The **Cristie Network Configurator** tool provides extensive facilities to configure the network during the recovery process. It offers the following features:

- supports multiple NICs
- configure individual NIC parameters for duplex mode and link speed
- the ability to select DHCP allocated or static IPv4 and IPv6 IP addresses
- the ability to setup DNS server IPv4 and IPv6 IP addresses
- the ability to setup the Network Identification of the recovering system
- allow file shares to be set on the recovering system (using IPv4 and IPv6 IP addresses)
- map/unmap network drives



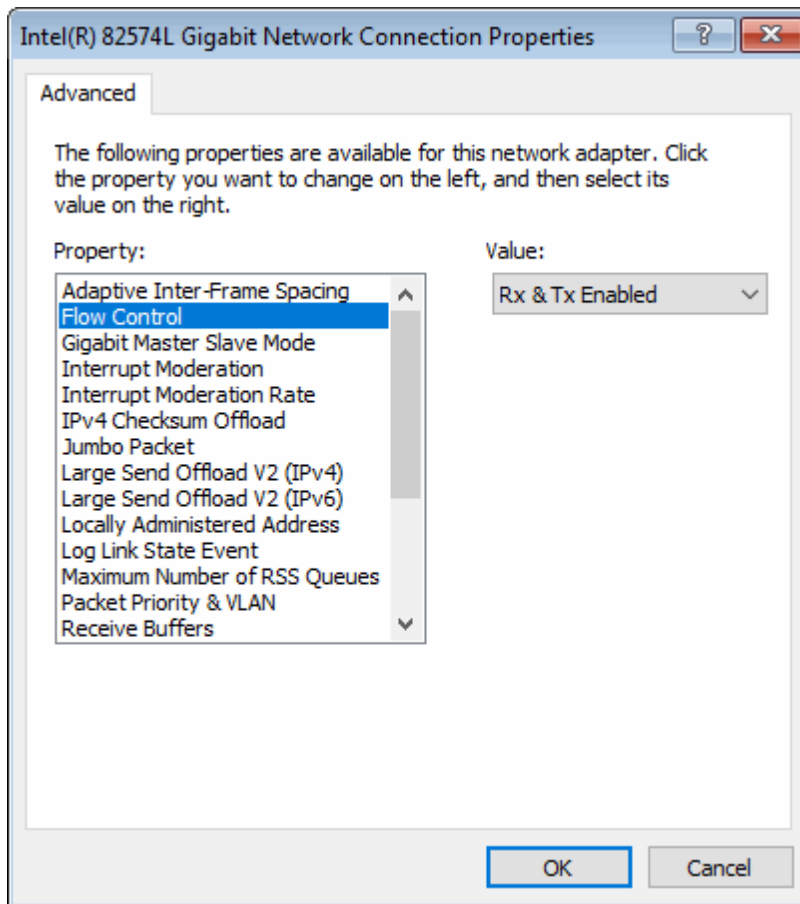
6.2.5.1 Configure NIC Parameters

It is possible to change both the link speed and duplex mode for any NIC detected on the recovering target system. Select the desired NIC (there could be more than one) from the drop down box and then select [Update...](#)



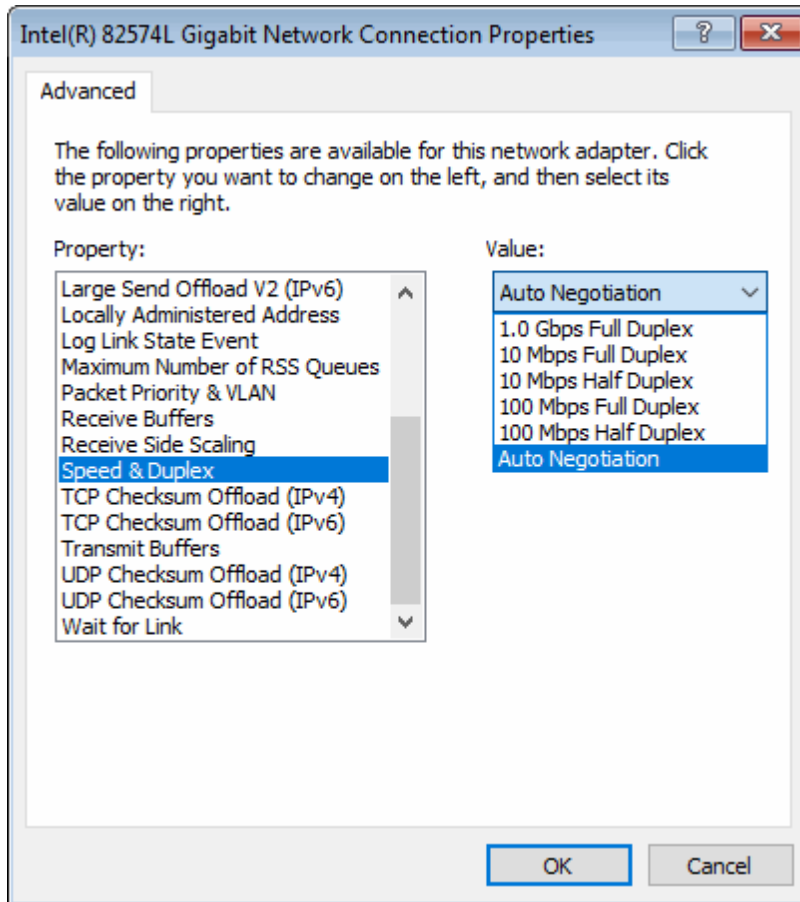
The resulting display offers numerous NIC properties that can be changed. This property list is dependent upon the NIC - ie. not all properties will be available for all NICs.





To change the NIC speed or duplex setting, select the corresponding Property from the dialogue and then select the required value from the Value drop down box as shown below:





Again, note that the speed/duplex settings available are NIC dependent. Auto Negotiation is generally the NIC default setting. Other NIC properties may be changed as required.

If the NIC is currently connected to the network then the *Status* will be shown as **Operational**. Otherwise the NIC is considered to be **Non-Operational**.

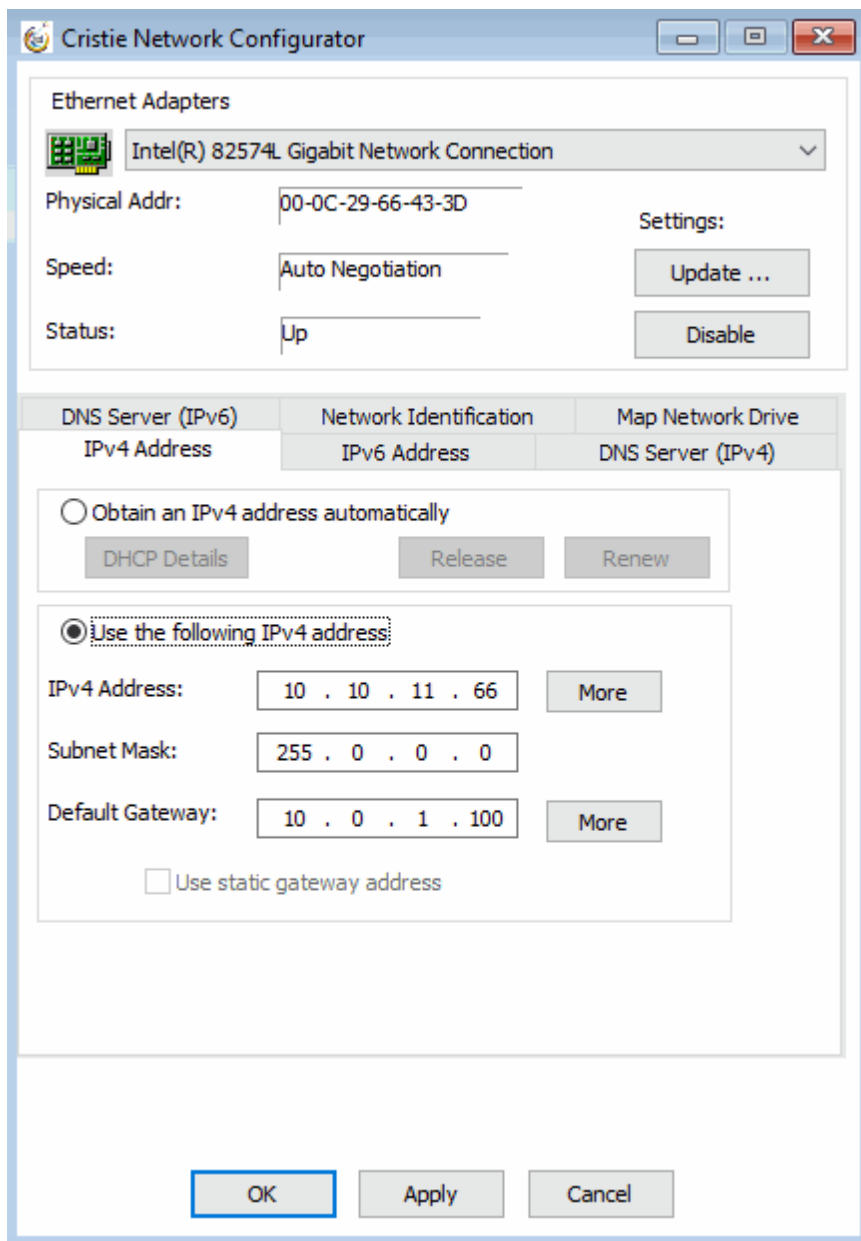


6.2.5.2 Assign Static or DHCP IP Settings

Normally the WinPE5, WinPE10 or WinPE11 DR environment will start with DHCP enabled and active. However, if a static IP is required, use the 'Use the following IP address' option to manually configure.

First ensure the desired network adapter is selected from the drop down list. If a static IP address is to be applied, select the 'Use the following IP address' button. This will automatically deselect the default DHCP option and allow the static IP parameters to be defined.

Different tabs are provided for configuring IPv4 or IPv6 IP addresses.



Set the new IP address, subnet mask and gateway IP address. The [More](#) button will allow the system to have more than one static IP address. Click on [Apply](#) to confirm the settings for the selected adapter.

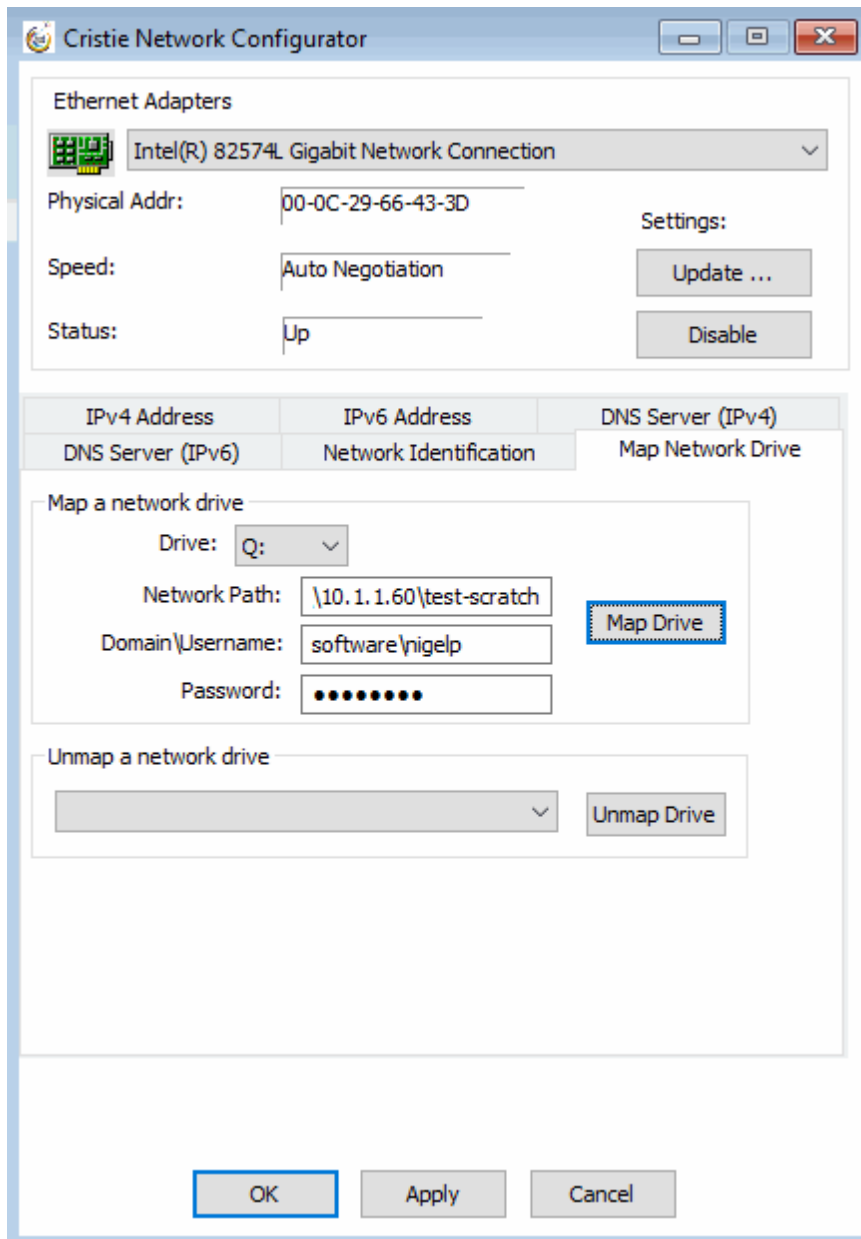


This feature will also allow the DHCP lease to be released or renewed, as required.



6.2.5.3 Map a Network Drive

In order to simplify access to network resources, the Network Configurator allows you to map a network drive to a network share. Start the Cristie Network Configurator from the **Tools** menu and select the **Map Network Drive** tab.



Select the drive letter that you wish to allocate from the **Drive** drop-down box and type in the share name that you wish to associate with it. Also specify the network credentials to be used to access the share.

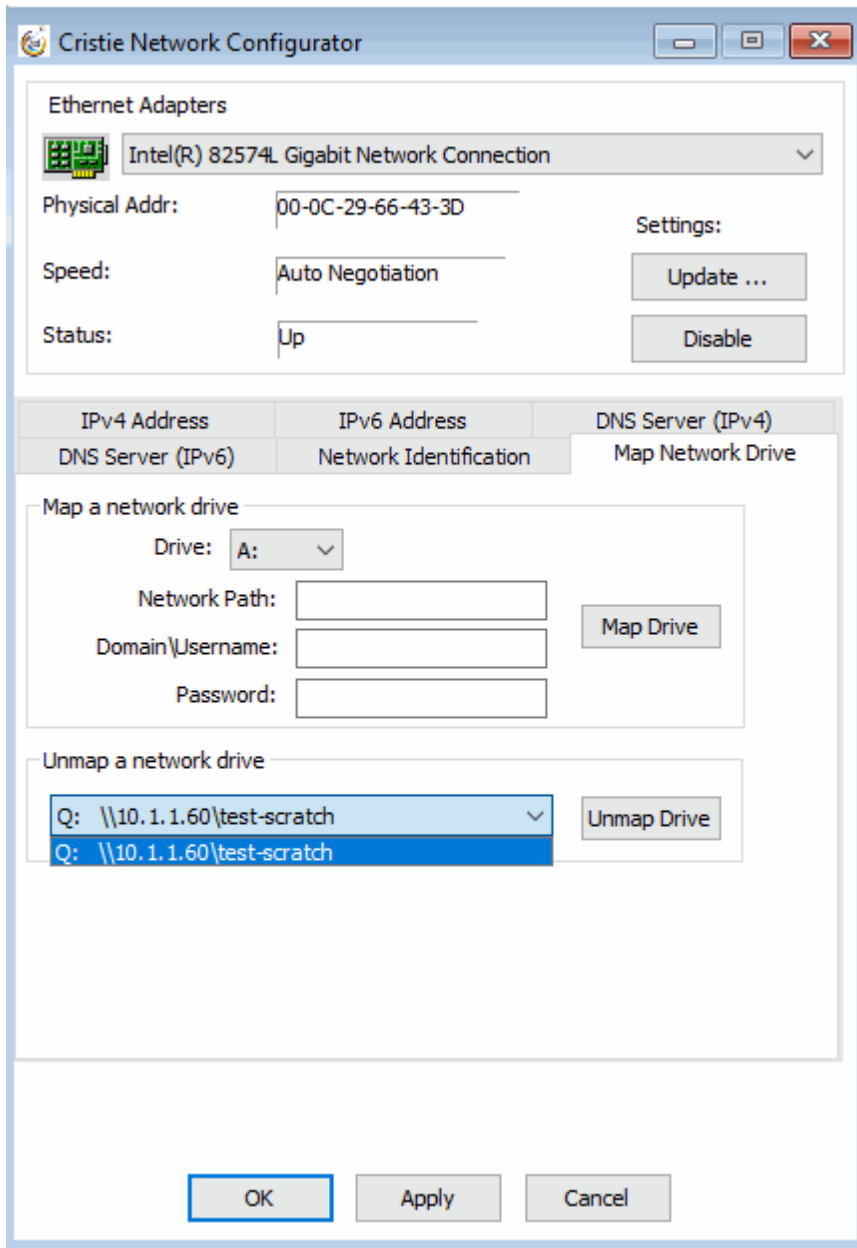
Note: The network path may be specified either by hostname, IPv4 or IPv6 address.

Press **Map Drive** to confirm the share operation. If successful, the share will be added to the **Unmap a network drive** drop down list.



6.2.5.4 Unmap a Network Drive

If you need to disconnect a mapped drive for any reason, this option allows you to do this. Just select the drive that you wish to disconnect from the Unmap a network drive drop down list and then click [Unmap Drive](#).



The mapped drive is removed from the list to confirm the operation.

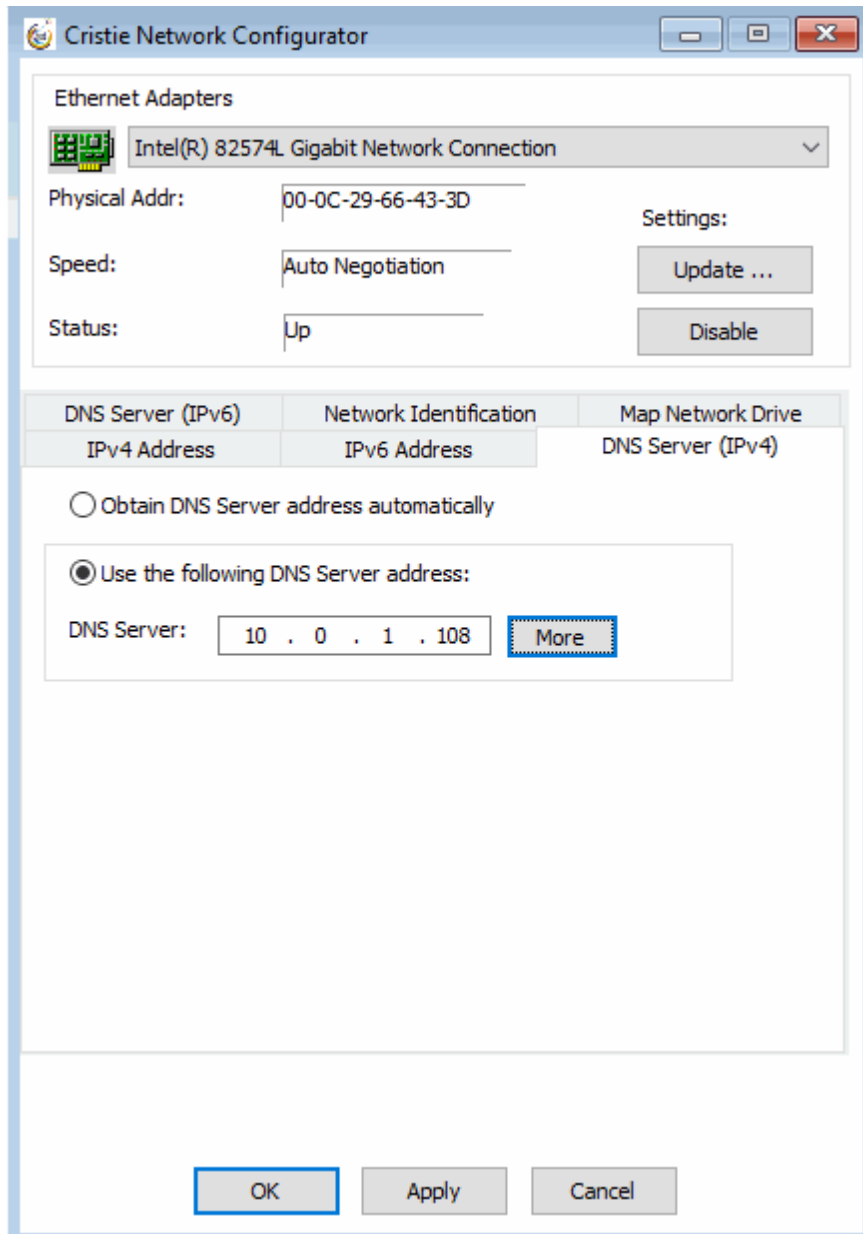


6.2.5.5 Setup DNS Servers

DNS server IP addresses are automatically set when the WinPE5, WinPE10 or WinPE11 DR environment boots. However, options are provided to allow DNS server IP addresses to be manually set if required.

Different tabs are provided for configuring IPv4 or IPv6 IP addresses.

Note: WINS servers are not currently supported by this tool.

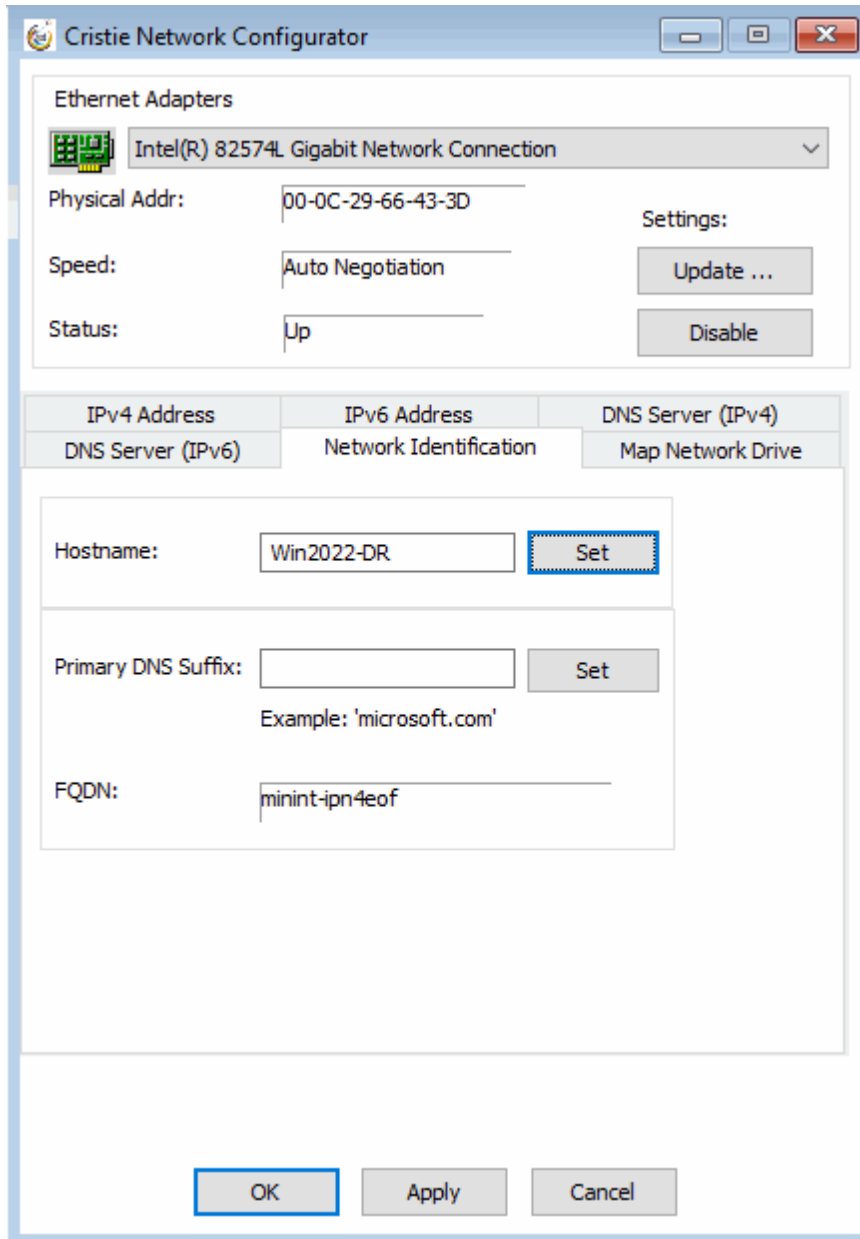


Select the **'Use the following DNS Server address'** radio button and enter the new DNS IP server address. If required, select the **More** button to add several DNS IP addresses. Press **Apply** to activate the new address.



6.2.5.6 Setup Network Identification

Click the **Network Identification** tab to setup a new hostname for the recovering system. This allows the WinPE5, WinPE10 or WinPE11 hostname and Primary DNS suffix to be changed during a DR session if required. These details are transient and only apply only while the WinPE5, WinPE10 or WinPE11 DR session is running. They are not applied to the recovered system when it reboots after the DR session.



Enter the new Computer Hostname and press **Set** to confirm the change.



6.2.6 Cristie Route Configurator

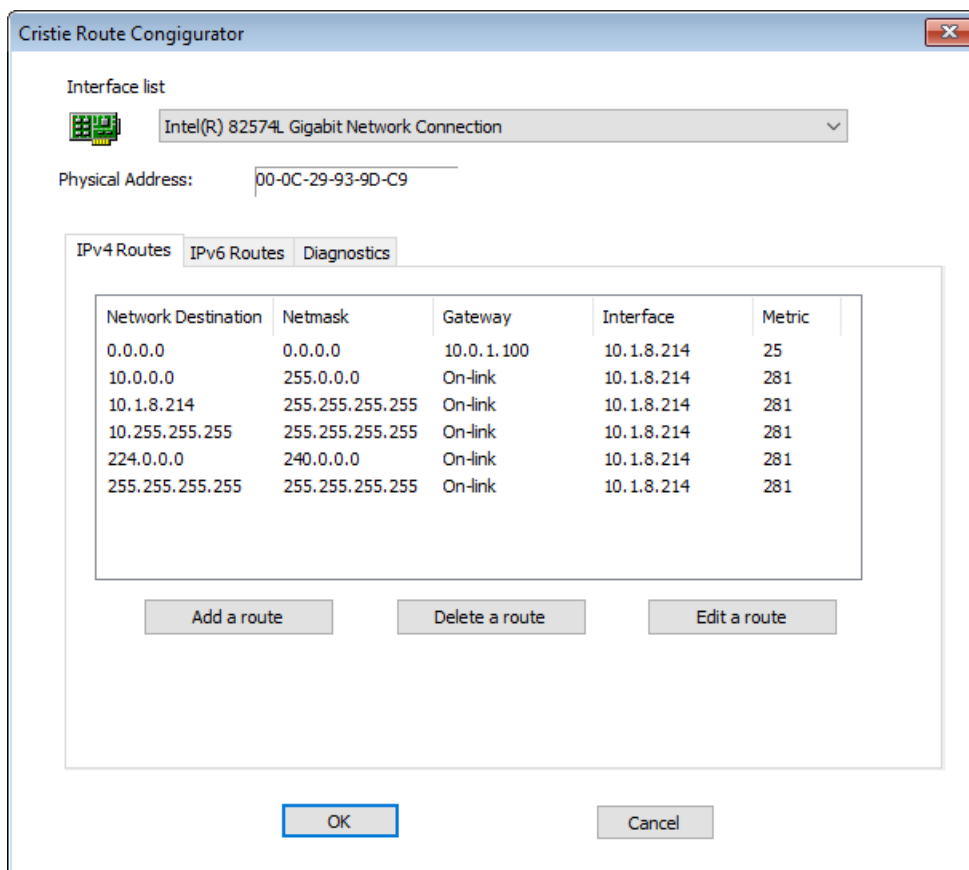
The **Cristie Route Configurator** tool provides extensive facilities to configure the network routes during the recovery process.

It offers the following features:

- supports multiple NICs
- provides the ability to add/modify/delete a route
- supports IPv4 and IPv6 routes
- allows IPv4 and IPv6 ping/tracert diagnostics to be run on a target hostname or IP address

6.2.6.1 IPv4

Click the IPv4 Routes tab if not already selected. First select the required interface from the drop-down list.



You may then add a new route, delete or edit an existing route.

To add a new route, click [Add a route](#). A data entry dialogue is displayed. To add a route identify the new route network, the route netmask, gateway and route metric. Click [Save](#) to add the new route or [Cancel](#) to cancel the creation of the new route.



Add a route

Network Destination: 10 . 10 . 1 . 1

Netmask: 255 . 255 . 0 . 0

Gateway: 10 . 0 . 1 . 100

Interface: 10 . 1 . 8 . 214

Metric: 32

Click 'Save' to add this route, or 'Cancel' to not add this route

Save Cancel

To delete an existing route, highlight the desired route in the displayed list and click [Delete a route](#). A confirmation dialogue is displayed. To delete click [Yes](#) to confirm or [No](#) to cancel the delete operation.

Delete a route

Network Destination: 10 . 1 . 8 . 214

Netmask: 255 . 255 . 255 . 255

Gateway: 0 . 0 . 0 . 0

Interface: 10 . 1 . 8 . 214

Metric: 256

Do you wish to delete this route?

Yes No

To edit an existing route, highlight the desired route from the displayed list and click [Edit a route](#). A data entry dialogue is displayed. Only the network gateway and metric can be changed however. Click [Save](#) to make the changes or [Cancel](#) to abandon the changes.



Network Destination: 10 . 1 . 8 . 214

Netmask: 255 . 255 . 255 . 255

Gateway: 1 . 0 . 0 . 0

Interface: 10 . 1 . 8 . 214

Metric: 256

Click 'Save' to change this route, or 'Cancel' to not change this route

Save Cancel

6.2.6.2 IPv6

Click the IPv6 Routes tab if not already selected. First select the required interface from the drop-down list.

Interface list: Intel(R) 82574L Gigabit Network Connection

Physical Address: 00-0C-29-93-9D-C9

IPv4 Routes IPv6 Routes Diagnostics

Metric	Network Destination	Gateway
281	::/0	fe80::290:7fff:fedc:85ae
281	fe80::/64	On-link
281	fe80::e89c:5129:ac8b:2fb0/128	On-link
281	ff00::/8	On-link

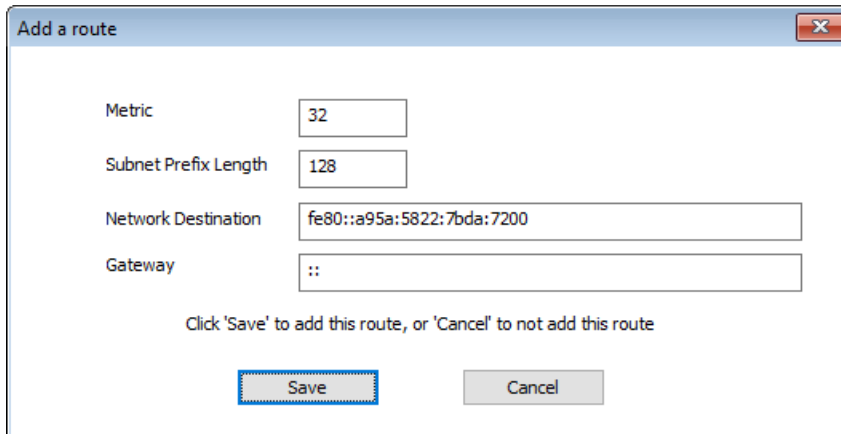
Add a route Delete a route Edit a route

OK Cancel

You may then add a new route, delete or edit an existing route.

To add a new route, click [Add a route](#). A data entry dialogue is displayed. To add a route identify the new route network, subnet prefix length, gateway and route metric. Click [Save](#) to add the new route or [Cancel](#) to cancel the creation of the new route.



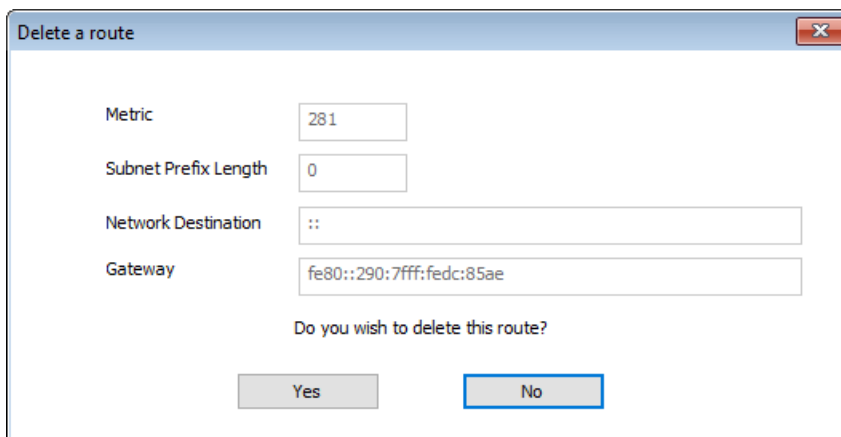


The 'Add a route' dialog box contains the following fields and controls:

Metric	32
Subnet Prefix Length	128
Network Destination	fe80::a95a:5822:7bda:7200
Gateway	::

Click 'Save' to add this route, or 'Cancel' to not add this route

To delete an existing route, highlight the desired route in the displayed list and click [Delete a route](#). A confirmation dialogue is displayed. To delete click [Yes](#) to confirm or [No](#) to cancel the delete operation.

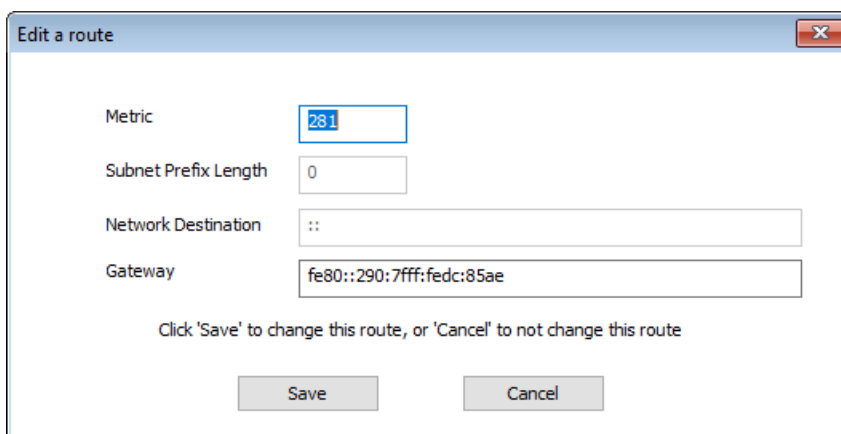


The 'Delete a route' dialog box contains the following fields and controls:

Metric	281
Subnet Prefix Length	0
Network Destination	::
Gateway	fe80::290:7fff:fedc:85ae

Do you wish to delete this route?

To edit an existing route, highlight the desired route from the displayed list and click [Edit a route](#). A data entry dialogue is displayed. Only the network gateway and metric can be changed however. Click [Save](#) to make the changes or [Cancel](#) to abandon the changes.



The 'Edit a route' dialog box contains the following fields and controls:

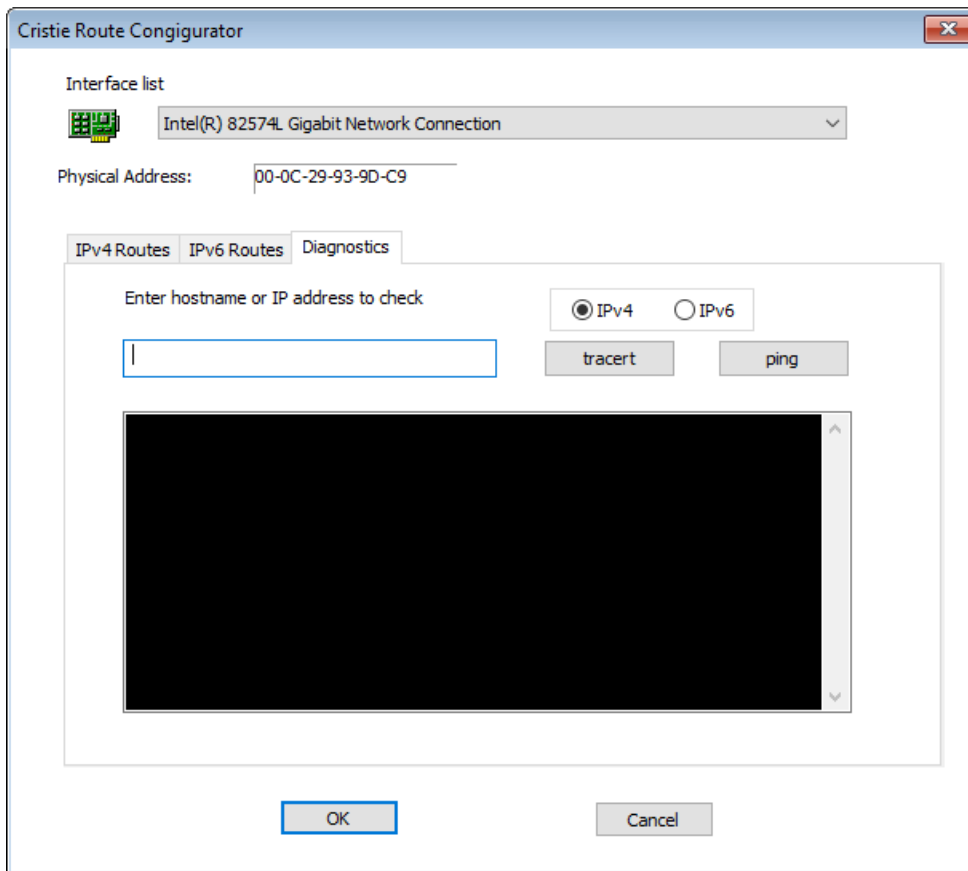
Metric	281
Subnet Prefix Length	0
Network Destination	::
Gateway	fe80::290:7fff:fedc:85ae

Click 'Save' to change this route, or 'Cancel' to not change this route



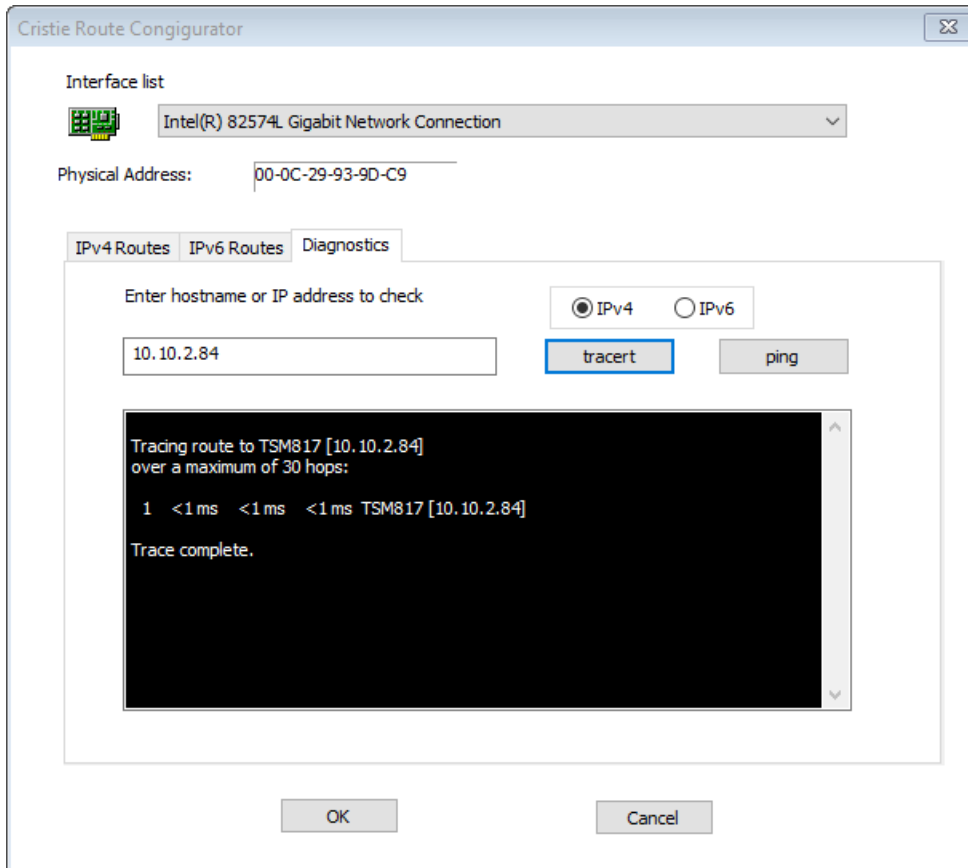
6.2.6.3 Diagnostics

Click the diagnostics tab if not already selected. First select the required interface from the drop-down list.

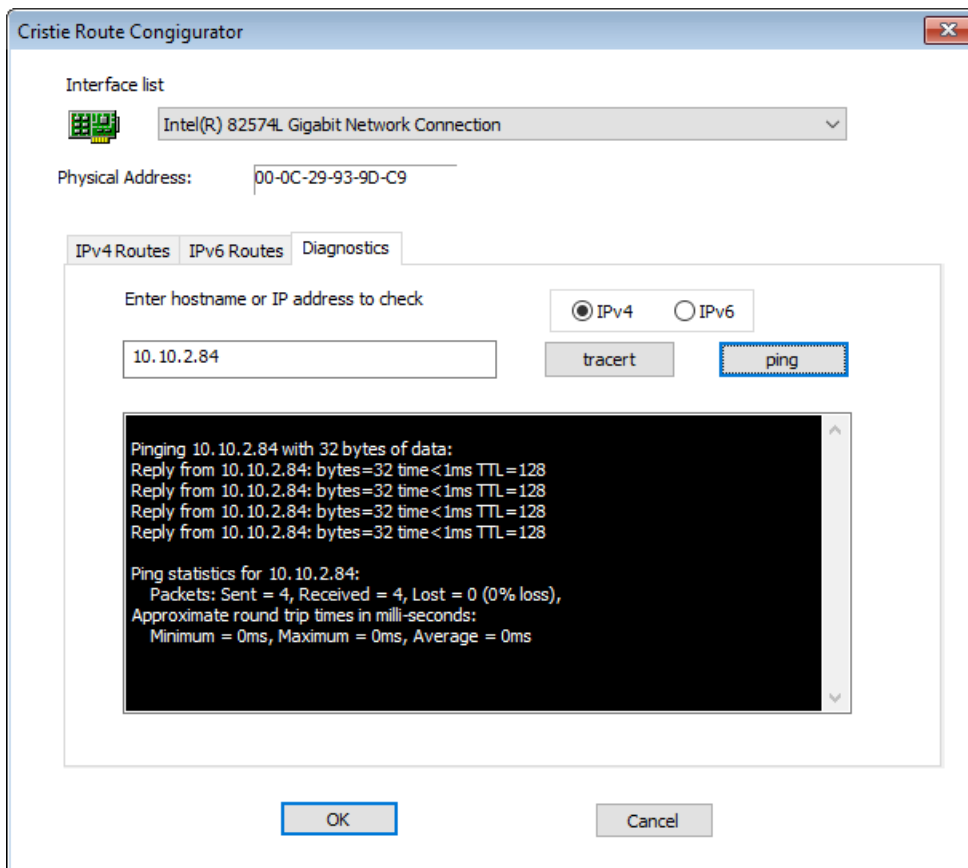


Enter either the hostname or IPv4/IPv6 IP address of the network target. Click [tracert](#) to examine the route to the selected target.





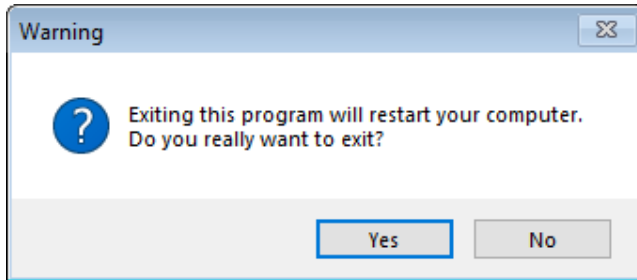
Click **ping** to check connectivity to the selected host. Click **OK** to exit the dialogue.



6.2.7 Reboot

After a successful recovery, select Reboot to exit the WinPE5, WinPE10 or WinPE11 environment and boot the recovered system. Note you may need to change the default boot device to be the OS boot disk since it may still be configured to boot from the ABMR DR boot environment.

Click **Yes** on the confirmation dialogue to restart or **No** to continue running the DR console:



6.3 Active Directory Recoveries

To perform an **Active Directory (AD)** restore on a DC no additional user actions are required during the restore phase.

For *block* or *image* based restores the **SystemState** is implicitly restored. For file based restore the SystemState is only explicitly restored if it has been backed up separately otherwise it is implicitly restored along with all the other files. In either case changes are made to SystemState to account for differences in hardware between the source and target machines and minor changes to the boot files if necessary.

After completing the restore the post-recovery phase does differ slightly. On first boot after recovery the system will boot into **Directory Services Repair Mode (DSRM)**. It will then perform some cleanup (required to reintroduce the DC back into its forest) and then reboot again to finalise this. Once this second reboot has taken place the DC should come back up OK.

Note: This entire phase is automated - the Microsoft online documentation states that a user must "login" to DSRM using a special username and password and run some steps. For ABMR AD recoveries this is not necessary and can cause issues. So the DC should be left alone until the second reboot takes place.

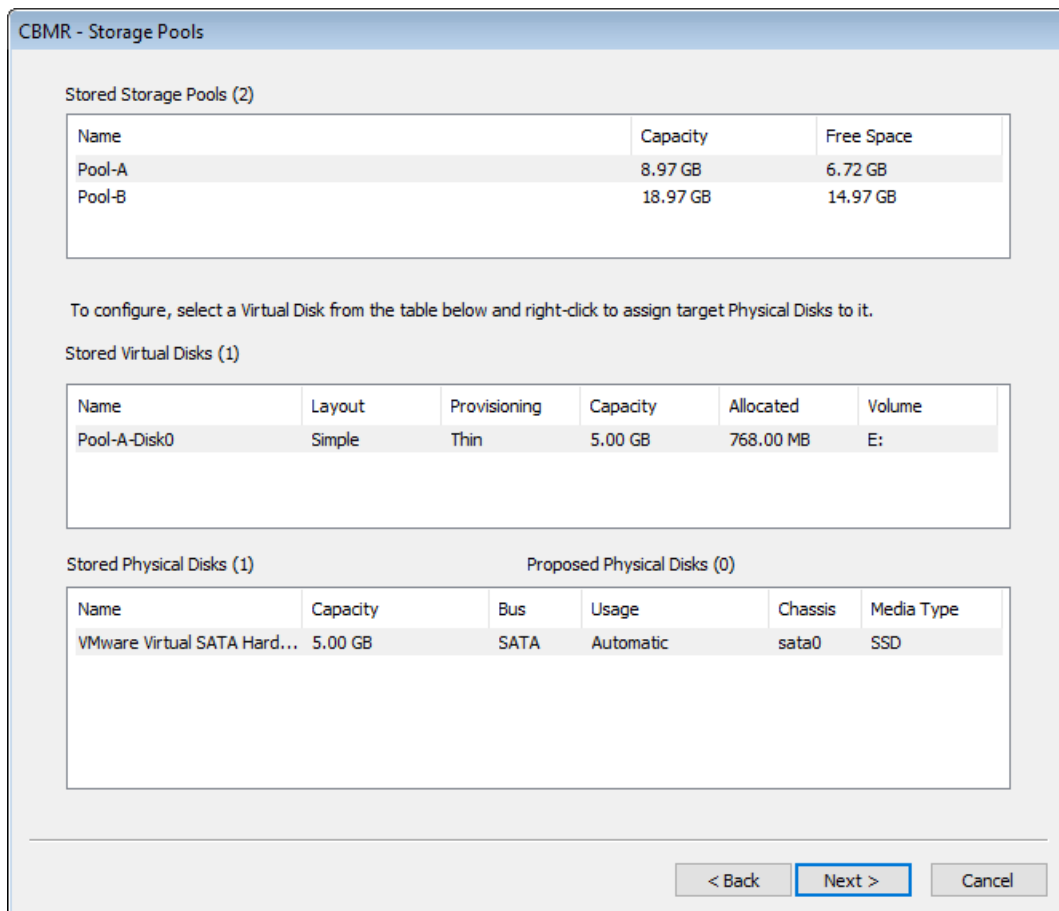


7 Appendices

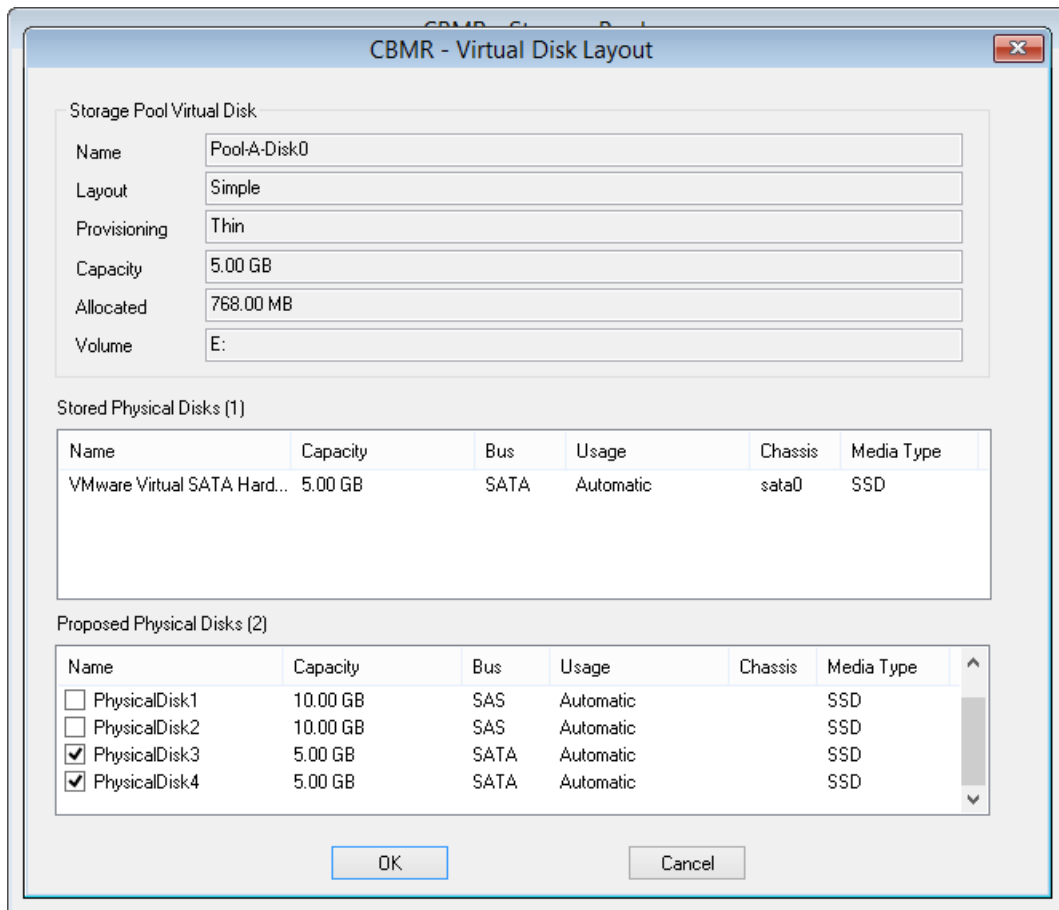
7.1 Storage Pool support

Windows **Storage Pools/Spaces** are now supported for Windows Server 2012 R2, 2016, 2019, 2022 and Desktop 10 and 11.

However, it is important you keep a note of your Storage Pool disk configuration since this will need to be manually re-configured during the recovery process. The Storage Pool names, physical and virtual disks will be saved, but not the disk mapping. For example, this is a typical Storage Pool configuration dialogue:



Right-click on a virtual disk to display the physical disk selection dialogue.



Note: nothing special needs to be done during the backup process as long as all the virtual disks in the pools are backed up.

Storage Pools created on iSCSI disks and restored to the same disks will need to be manually attached using the iSCSI initiator tool in the recovery environment **before** beginning the recovery sequence.

Similarly Storage Pools created on USB disks and restored to the same disks must be connected to the target host **before** booting the recovery environment.

Note: For a local USB disk to become part of a Storage Pool, it must be set to 'Not Removable' in the Windows settings Device properties. Otherwise it will not be offered as a candidate disk when setting up the pool.

If recovering a system with Storage Pools to a hypervisor or cloud, any source machine iSCSI or USB disks can be emulated with virtual disks on the target.

Note: Only the WinPE5 DR environment supports the recovery of storage pools at the moment.

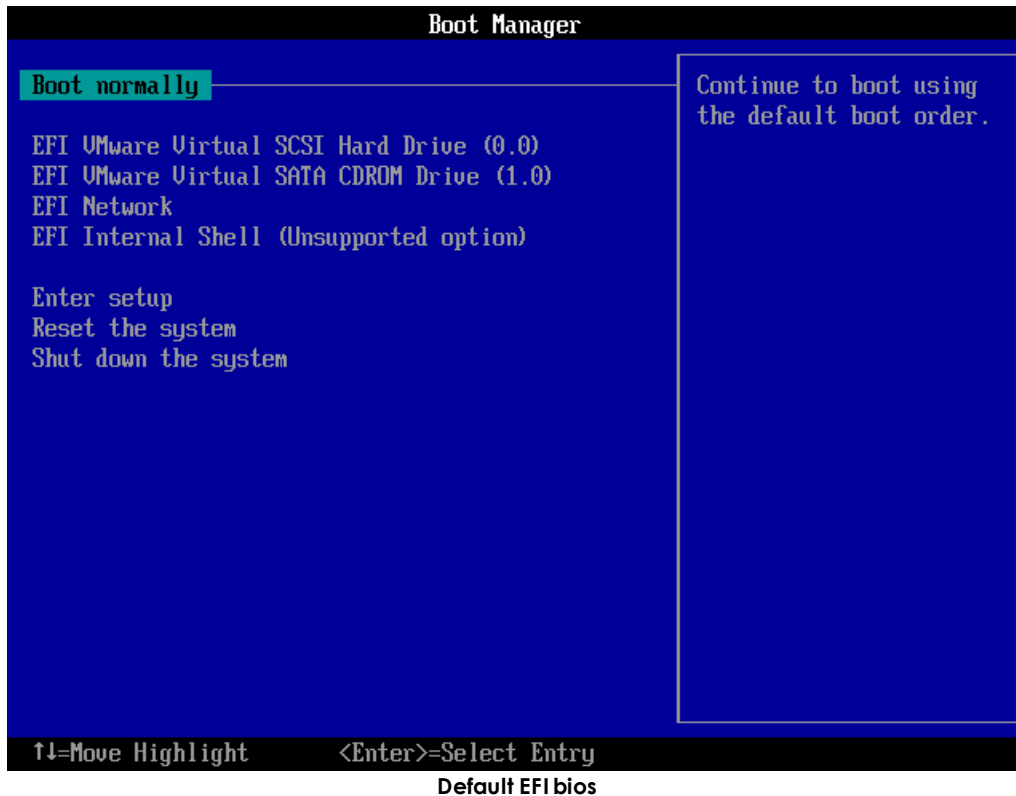
7.2 uEFI and MBR BIOS support

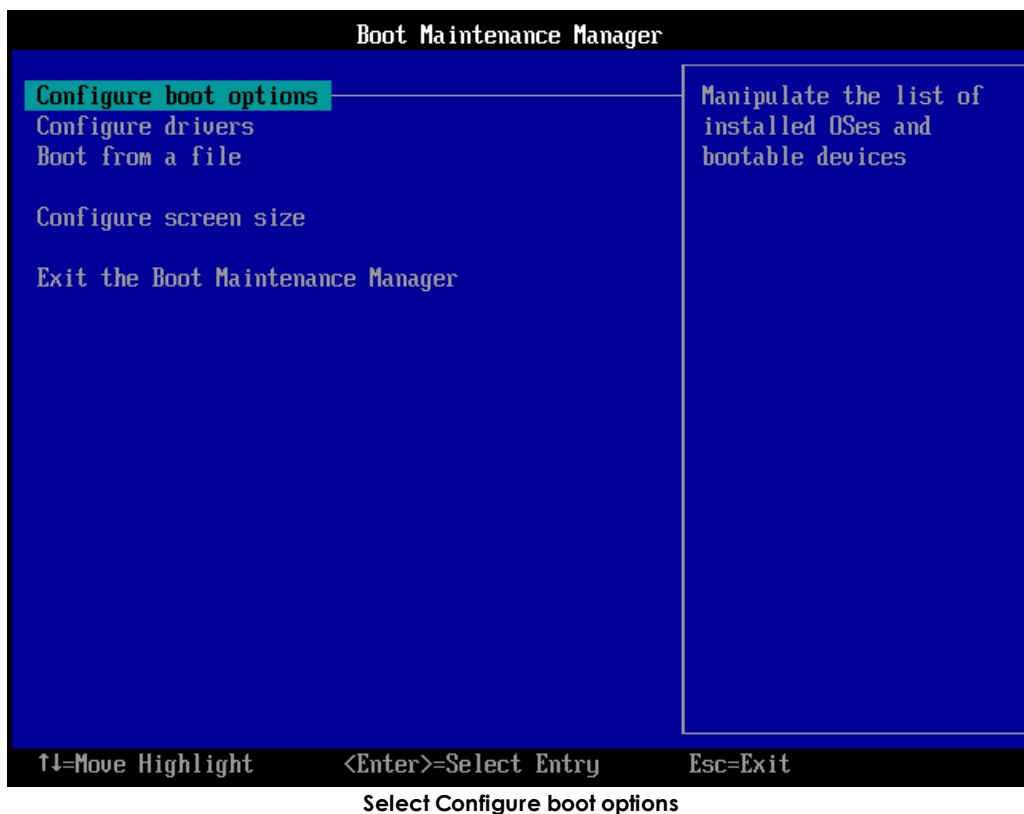
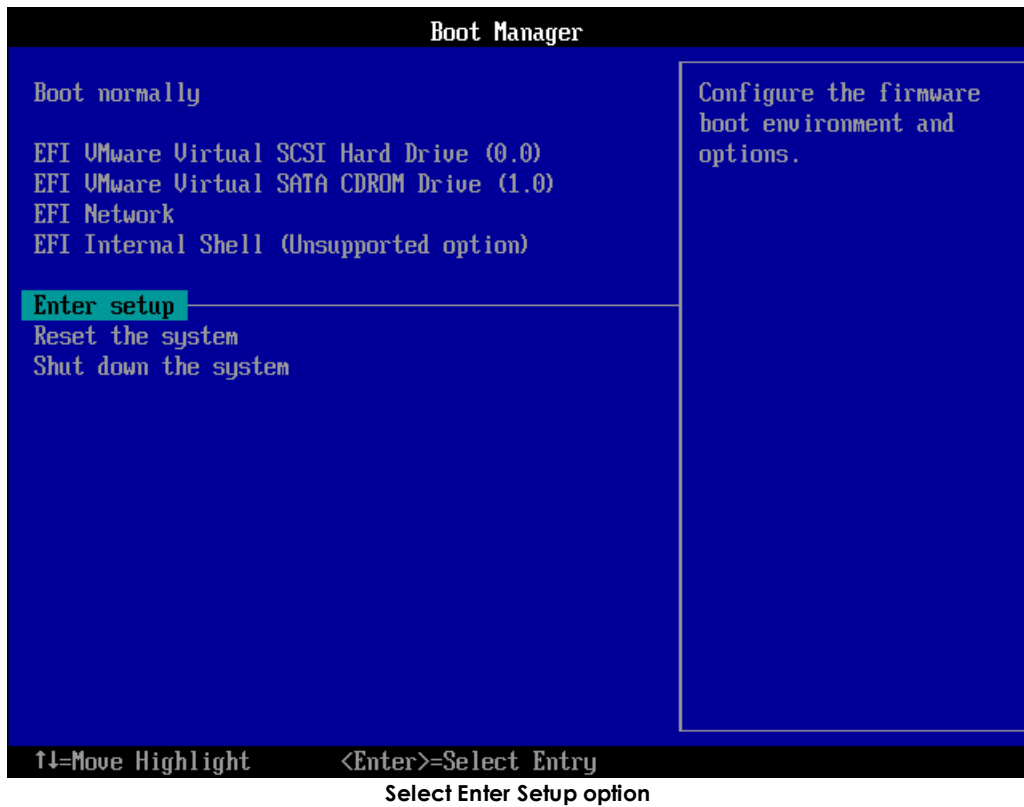
ABMR has the ability to convert a legacy BIOS boot configuration to a more modern EFI based boot configuration during a Windows clone operation. It does this automatically by creating an extra EFI partition on the detected boot disk and adding the requisite boot files to this partition. Regardless of the original boot disk type it will be converted to GPT format in the clone target system.

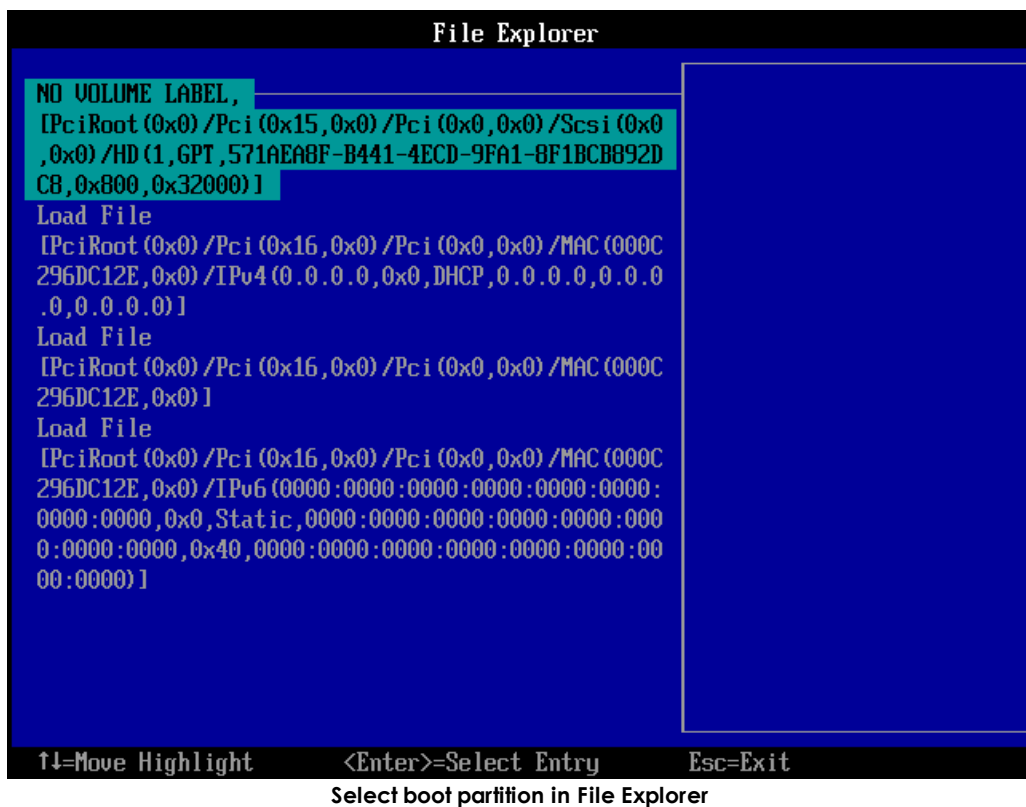
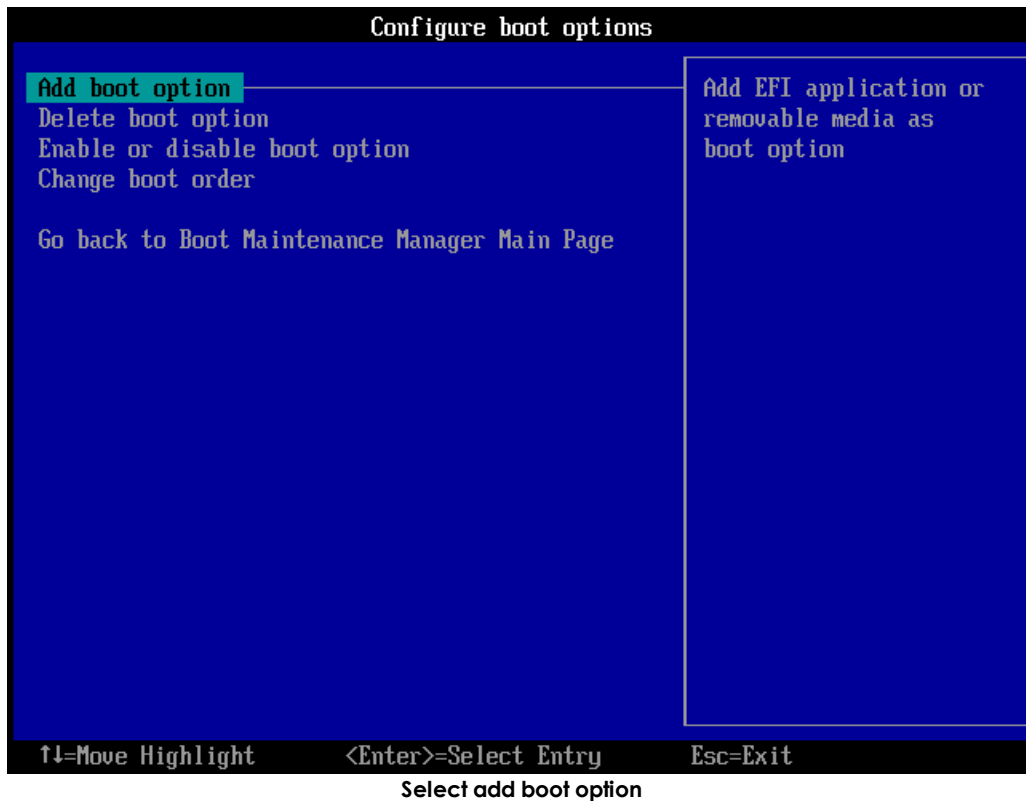


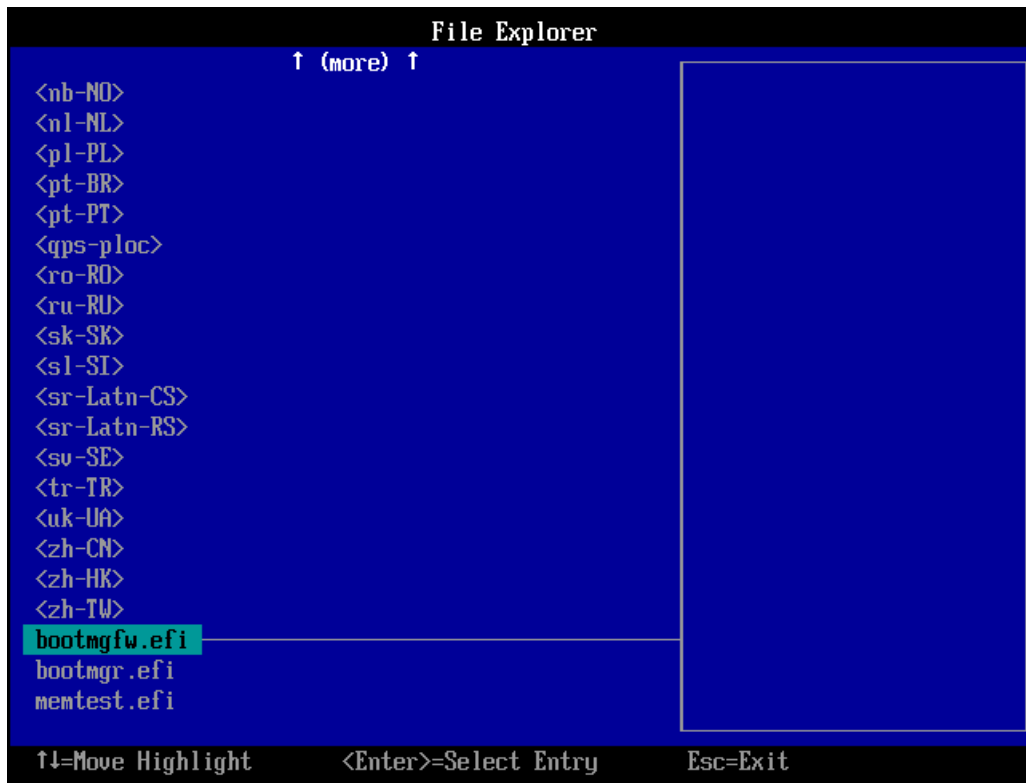
Note: This EFI BIOS conversion feature is only supported on compatible target environments such as physical machines, VMware Workstation™ and VMware vSphere™.

Prior to booting the new EFI clone target manual intervention will be required to configure a new boot option. An example of this obtained from a VMware Workstation™ clone target is shown below. Other virtual environments will be similar.

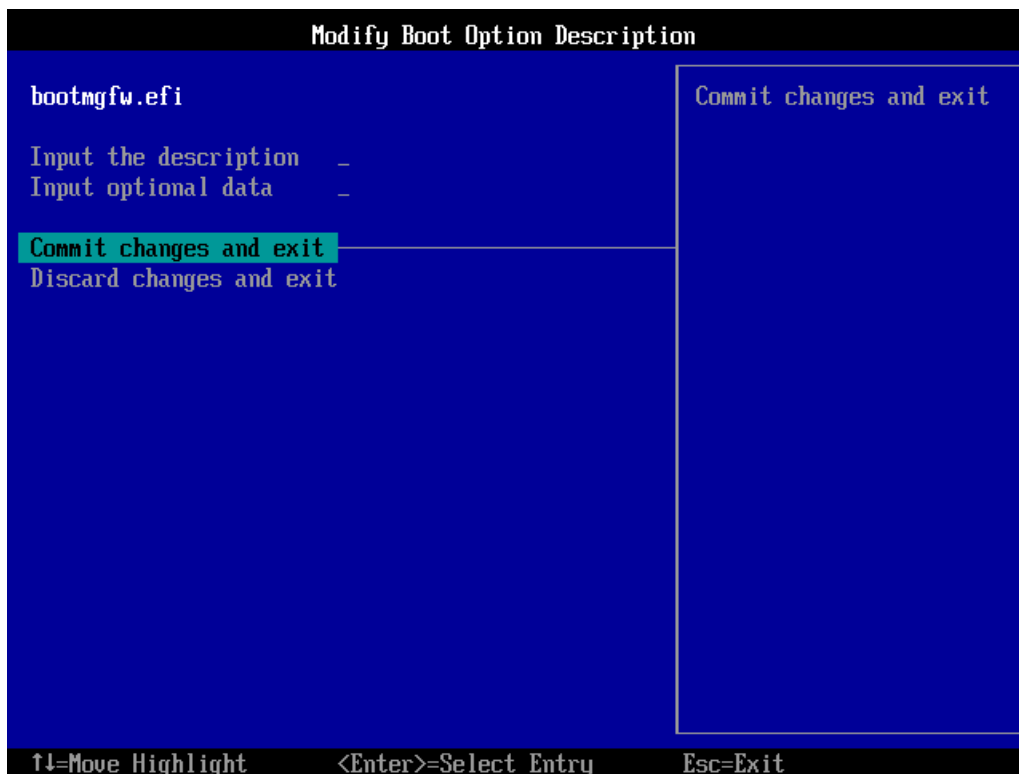








Select EFI boot image



Modify boot option description and commit



```

                                Boot Manager

Boot normally
EFI VMware Virtual SCSI Hard Drive (0.0)
EFI VMware Virtual SATA CDROM Drive (1.0)
EFI Network
EFI Internal Shell (Unsupported option)
Boot0004
Enter setup
Reset the system
Shut down the system

Device Path:
PciRoot (0x0) /Pci (0x15,0x0) /Pci (0x0,0x0) /Scsi (0x0,0x0) /HD (1,GPT,571AEABF-B441-4ECD-9FA1-8F1BCB892DCB,0x800,0x32000) \EFI\Microsoft\Boot\bootmgfw.efi

↑↓=Move Highlight      <Enter>=Select Entry
                                New boot option configured

```

This feature supports clone source systems with a split boot configuration (i.e. *Boot* and *System* partitions on different disks or different *Boot/System* partitions on the same disk). The split boot configuration will be replicated on the clone target subject to the GPT conversion mentioned above.

This feature also supports source systems configured with a Windows dynamic boot volume (e.g. a dynamic mirror).

It is also possible to clone an EFI based source system to a target configured with a legacy BIOS. In this case any GPT based boot disks will be converted to legacy MBR disks and the EFI partition removed.



8 Cristie Technical Support

If you have any queries or problems concerning your Bare Machine Recovery for Dell EMC Avamar™ product, please contact Cristie Technical Support. To assist us in helping with your enquiry, make sure you have the following information available for the person dealing with your call:

- ABMR Version Number
- Installed OS type and version
- Any error message information (if appropriate)
- Description of when the error occurs
- All Cristie log files relating to the source or recovery machine. This is very important to help us provide a quick diagnosis of your problem

Contact Numbers - Cristie Software (UK) Limited

Technical Support	+44 (0) 1453 847 009
Toll-Free US Number	1-866-TEC-CBMR (1-866-832-2267)
Knowledgebase	kb.cristie.com
Forum	forum.cristie.com
Sales Enquiries	sales@cristie.com
Email	support@cristie.com
Web	www.cristie.com

Support Hours

05:00 to 17:00 Eastern Standard Time (EST) Monday to Friday

Out-of-Hours support available to customers with a valid Support Agreement - Severity 1 issues* only

UK Bank Holidays** classed as Out-of-Hours - Severity 1 issues only.

*Severity 1 issues are defined as: a production server failure, cannot perform recovery or actual loss of data occurring.

**For details on dates of UK Bank Holidays, please see www.cristie.com/support/

Cristie Software Ltd. are continually expanding their product range in line with the latest technologies. Please contact the Cristie Sales Office for the latest product range.

